

PARISH & COMMUNITY MAGAZINE

For the communities of Coed-y-Go, Llanyblodwel, Nantmawr,



Porth-y-Waen, Treflach, Trefonen and places in between and beyond

Produced by All Saints and St Michael's churches

Free of charge - please take one

Vol 34; No.4 May 2024

Border Group of Parishes

Llanyblodwel, Llanymynech, Morton & Trefonen



Rector: Currently vacant

Benefice Administrator: Helen Parish

bordergroupadmin@hotmail.co.uk

01691 590025

Helen will be in the office (in the Rectory) each Thursday, 9.30 - 2.30. Callers are welcome, but please phone first to let her know you're coming.

Benefice website:

borderparishes.org.uk

Webmaster:

Jeff Court:

itadmin@borderparishes.org.uk

Principal church contacts:

Trefonen:

PCC Secretary: Helen Parish helen-parish1@hotmail.co.uk 01691 670979

Churchwardens: Bob Kimber bobnkkimber@btinternet.com 01691 679646

Malcolm Kirk malcolm.ref1170@gmail.com 01691 688595

Safeguarding Officer: Jeanne Bradley jeannemccarley@hotmail.co.uk

Llanyblodwel:

PCC Secretary: Sioned Lindsay sioned@gmail.com 07775 437101

Churchwardens: Roger Taylor roger@blodwell.com 07967 652217

Alec Gordon alecgordon@btinternet.com 01691 828896

Safeguarding Officer: Abie Tudor abie.tudor@gmail.com 01691 830350

Magazine:

Editorial team:

Content: Janey Fisher

Facebook page: Isobel Fisher

Compilation: Peter Woollam

Invoicing of advertisers: Barry Evans

For all of the above, use: trefonenparishmagazine@gmail.com

The magazine can also be read online and downloaded as a pdf file
(in full colour) at either borderparishes.org.uk or trefonen.org

From the Editor:

Welcome to the May issue – and the big theme of this issue is, of course, the Hill Walk Weekend held in and around Trefonen at the end of the month. The weekend starts on Saturday 25th May and runs through into Bank Holiday Monday, 27th, culminating with the Talent Show at the Village Hall at 6.30pm. We hope you can find everything you need to know for this major annual event on pp.5–9. But before that happens, there are other events to look forward to, including *Aggie*, the Trefonen WI show at the Village Hall on May 9th, and the Trefonen Garden Club plant sale on May 18th, same venue. There is no Flicks in the Sticks film this month, but these will resume in June.



The third of our *On Your Doorstep* articles (p.46) takes us to a hidden lake and a secret woodland beyond Llansilin (I'm certainly going to ask Meanderer for the pdf he mentions...). In the first of our Garden Renovations series (p.50), my *alter ego* Jane Anstey writes about rescuing the garden at Glenthorne from its overgrown state since settling at Trefonen in 2021. I'm hoping this will inspire others to give their stories of garden rescue, development and design. There are plenty of keen gardeners in the village and several gardens that have been redesigned or reorganised in recent years, and it would be good to learn their stories.

Also in the magazine this month, the Shropshire Wildlife Trust give details of local events that may be of interest (p.13), while the Diocesan Environmental Officer writes about slowworms in churchyards (p.35), John Davies reports on Community Speed Watch progress (p.17), and Jenny Hoare shares a photo from the past (p.38), inviting readers to attempt to identify the chapelgoers shown there. That's in addition to our regular items from Ann Hindley (p.4), Trefonen WI (p.12), Trefonen Garden Club (p.34), the Sofa Club (p.29), Bryn Offa School (p.31), news from St Michael's Llanyblodwel (p.27), and, new for this issue, a report from the Poetry Group (p.53). THOUGHT FOR THE MONTH (p.28) has been contributed by Paddy Brown, worship leader at St Agatha's, Llanymynech, another parish in the Border Benefice. I'm pleased to say, also, that we have received some cryptic quizzes from one of our readers, the first of which is on p.25. Thank you very much to Norma! This month's Letter to the Editor, on the thorny topic of lambs at risk from dog attack, is on p.52. We'd like to encourage more people to write Letters to the Editor or react to letters from previous issues. Letters can be on any topic – what you enjoyed at the Hill Walk weekend, for example; that would do nicely next month, if anyone feels inspired.

Our OUT AND ABOUT photos on the back cover this month include the new re-opened Barley Mow – which we welcome warmly; donkeys crossing the road during the Palm Sunday procession from the Village Hall to the Church, in which I counted somewhere between 40 and 50 people taking part; and a road sign that has no local connection but made us laugh.

Janey Fisher

Note: We warmly welcome all your contributions, but please be aware that on occasion these may need to be edited for length or to ensure relevance to our readership. I will always consult with the author if any substantive changes are needed, but in these cases please note that the editor's decision is final. – Ed.

May Is Here Again!

Happy Spring everyone and here is my Nudge for the Hill Walk.
After you have done your walk and enjoyed Saturday ...



Our Grand Wheels Parade will take place on Sunday 26th May and will assemble in Bellan Lane (opposite the shop) at 3.10pm. It goes without saying that I am banking on people joining in with decorated wheelie things (and hopefully decorated people!)



There will be a prize for the BEST decorated wheelie and owner so don't be shy! It will be a lot of fun and the noisier we are, the better! Shakers will be given to help with this criteria and available at the shop with your entry number on. The Parade Procession will go down School Lane onto the field where the judges will decide on a winner! You can then enjoy all the great competitions in the Village Hall, Feast on the BBQ and enjoy the rest of the day!

AND- that's not all!

After all these festivities, On Monday 27th May (after more walking you will want to relax, sit and be 'Wowed' by the SHOW TIME evening of talent which will be at 6.30pm in the Village Hall!



We still have a few spaces for extra talent! If you can entertain in any way – tell jokes, juggle, sing, dance, play anything musical then chat to me on 07773 132486. No judging, no pressure, just enjoyment and fun! It's a fantastic way come to together as a community to end our wonderful Hill Walk!!

**HEY TREFONEN!
IT'S SHOW TIME!**

Then.....      

Until next time.....

Ann Hindley

Trefonen Hill Walk 25th - 27th May 2024:

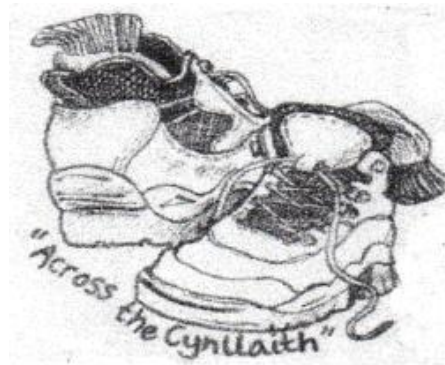
The weekend will this year be raising funds for The Mkoba Polyclinic in Zimbabwe, the Mirembe Clinic in Uganda, the Movement Centre at the RJAH Hospital and the Monday Night Club in Trefonen.

The theme for the weekend is "IT'S SHOWTIME".

Saturday 25th MAY

Across the Cynllaith

A fabulous 16 or 10 mile walk starting from the village hall at 8.00am. Entries for this walk can be made using the www.SiEntries.co.uk web site up until Wednesday 22nd May. The SiEntry system is limited to 300 entries. An additional 50 entries will be available for those living within the parish at the On-The-Day check-in desk.



The Motor Bike Trial

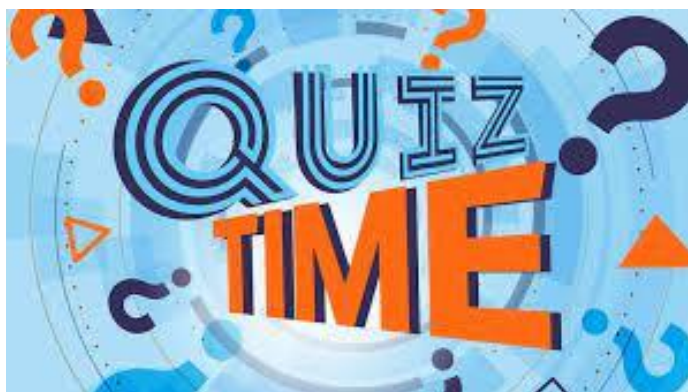
2.00pm New Barns Farm
Mynydd Myfyr often hums to the sound of trials bikes but, thanks to Pete Morris and his workforce, this trial is especially for The Walk Weekend. It's a sport of skill and balance ...spectators are more than welcome.

Entry on the day. All classes catered for .

The Hill Walk Quiz

Trefonen Village Hall 7.30pm
Teams of 4 (£5 per person). Book your team in at Trefonen Shop (pop £20 in an envelope and put the name of your team on the front).

Cheese and Biscuits Supper
Always a great night!



Our Hill Walk Charities, 2024:

The Movement Centre

The Movement Centre is based at the Robert Jones and Agnes Hunt (RJAH) Orthopaedic hospital, Gobowen. It specialises in helping working with children who have conditions such as cerebral palsy, Down's syndrome and other diagnoses, helping them to achieve new skills by increasing strength and control of their movement.



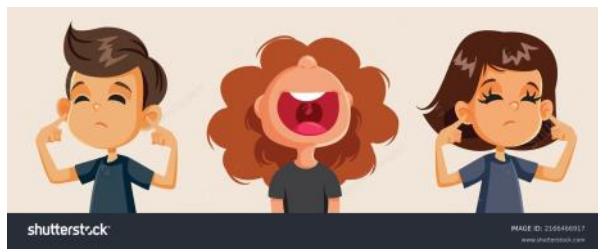
Sunday MAY 26th

Family Service ('The Hillwalk Service')

9.30am **All Saints Church Trefonen**

A time to sing your socks off, and also take a quiet moment. Now is your chance to learn about the good work we are supporting this year, here and overseas.

Everyone 100% welcome



Mynydd Myfyr Run

Start at Trefonen Village Hall SY10 9DY. Start time 11.00am.

Great introduction to off-road running and racing. Approx 6.5K (4 miles) of mixed terrain on trail paths, through farmland, wooded areas and country lanes, including climbs totalling 150m (500ft).

Entry on the day £7; FRA rules apply. Prizes for first three men and women plus age group prizes: 40+, 50+, 60+, 70+.



Duck Race

Start time 2.00pm.

To watch your duck follow the signs down School Lane.

£1 a duck Available from the shop or Janice. Prizes for fastest duck, slowest duck and random ducks in between!



HEY TREFONEN! IT'S SHOWTIME

3.30pm The Parade

A Grand Wheel Parade all you have to do is decorate yourself and your wheels (tractor, wheel barrow, pushchair, wheelchair, skateboard, bicycle, horse and cart let your imagination run wild!!)

Entry £3, Children £1. Register with Ann Hindley 01691 661656

Followed by a crazy afternoon on the playing field and in the hall, organised by Trefonen Football Club and Trefonen WI .. not to be missed!!

Our Hill Walk Charities, 2024:

The Monday Night Club

The Monday Night Club is a Trefonen-based group of volunteers who work hard to keep the playing field and surrounding areas looking good. They also help members of the community when an extra pair of hands is needed and they give us LOADS of help over the Hill Walk Weekend.

Monday MAY 27th

The Family Walks Day

Three signed routes:

- Buzzard Walk 6 miles
- Curlew Walk 3½ miles
- Jungle Walk: Mud and more Mud!!



Register at the tent on the green and collect your map.

There's a churn at the top of the hill for your donation.

Apart from 2002 (foot and mouth) and 2020 (pandemic), this part of the Trefonen Hill Walk has happened since 1991 ... it's the hub of the event.

Evening of Talent



The Village Hall at 6.30pm

The finale to the weekend is a concert show casing our amazing local talent. It will be fabulous!!

And after that sleep!!!!



Helen Francis

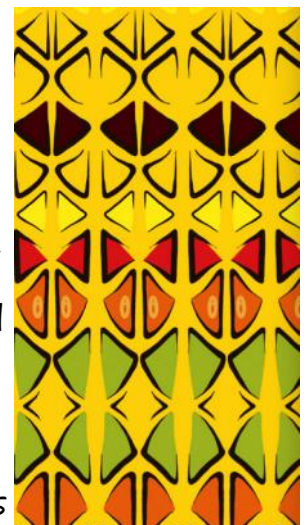
Our Hill Walk Charities, 2024:

The Mkoba Polyclinics in Zimbabwe and Mobile Outreach Clinics in Kampala, Uganda

We supported this work in 2021. Our money enabled Mkoba to buy some much-needed basic equipment (including the baby scales). It also meant that the mobile clinics in Kampala could vaccinate 200 children and treat many people for illnesses like diabetes, blood pressure and malaria. We are hoping that our support this year will mean that they can continue this important work.

Our efforts are worthwhile !!

Helen Francis



Come and hear more about these charities at the Hill Walk Family Service at Trefonen Church, 9.30am, Sunday May 26th – Ed.

Walk a Marathon in May

Take part in this sponsored event to raise money for the Trefonen Hill Walk Charities and at the same time get fitter and improve your general health.

Walk 1 mile every day in May from 1st to 26th.

We will be starting the first and last walks on the Playing Fields in Trefonen (three laps of the field) on:

1st May at 6:30pm

26th May at 4:15pm

BUT feel free to walk your 'Marathon Miles' anywhere you like.

One suggested 1 mile route in Trefonen is:

From the Barley Mow car park, go up Bellan Lane, turn right into Post Office Lane walk to the end then turn right and walk down Chapel Lane back to the pub.

Why not post a photo or video clip of your walk on the Trefonen Hill Walk or Face Book pages online.



Prizes for:

The youngest walker

The oldest walker

The most money raised

The person who lives the furthest away

The best video clip posted

And for under 12s illustrate your daily walking calendar in whatever creative way you would like. All of these will be on display in the Village Hall for the rest of the weekend.

Add your name to the list of walkers on Facebook and download a Sponsor Sheet and Calendar from the website or they will all be available in the village shop.

Hand in your sponsor money at the desk on the Playing Fields after the final mile on the 26th May.

If you can't make the final day, pay in your sponsor money by bank transfer:

Trefonen Hill Walk Sort code: 40-35-32 Acc: 71313541 Ref: your name





Trefonen WI

Village Show

Trefonen Village Hall

Sunday May 26th 2.00 - 4.30

Competitions

**Family fun
and games**

Refreshments

Flip the Frog ∞ Buzzer run ∞ Catch the Fish ∞ Face Painting

Pirate Treasure Map ∞ How many sweets in a jar?

And lots more!

3 garden flowers in a jam jar ∞ Longest nettle (no roots)

Fruit or vegetable animal ∞ Photography (Me in my favourite outfit)

Garden on a dinner plate ∞ Sock creature

1 decorated cup cake (prize for decoration)

(Drop off entries between 1.30 and 2.15, with your name and age if you are a child)

For more details about games and competitions, see the Trefonen Hill Walk website or Facebook

Bring plenty of small change!

Trefonen Hill Walk 2024





TANAT VALLEY **FIREWOOD**

Sustainable Local Winter Fuel

Hardwood or Softwood

Ready to Burn or Part Seasoned

Free Local Delivery

Stacking Available

Discounts on Larger Loads

Please Contact 01691 791 571 or 07985 347741



C H Stone Ltd

Dense, hard, rustic stone from Wales suitable for a variety of uses, such as:

- Walling projects
- Architectural features
- Boulders for gardens and driveways

Colour is a blend of gold and brown

For further information and prices, please email:
clive.humphreys22@gmail.com

 **Trefonen and District
Garden Club**

Trefonen Garden Club Monthly Meeting

7:30 p.m. Thursday 18th April at Trefonen Village Hall SY10 9DY

Garden Design - Tips and Tricks by Pip Smith

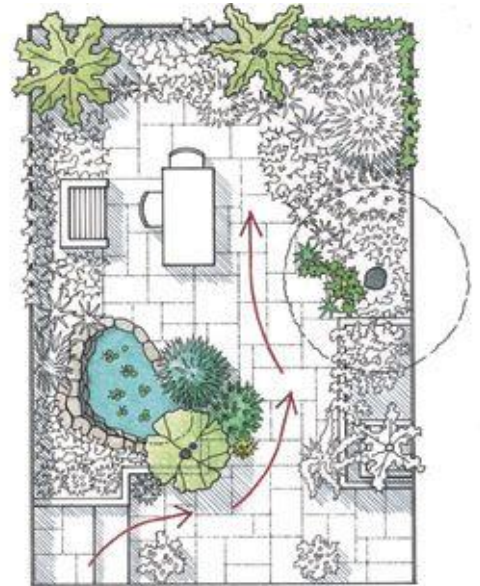
A welcome return of Droitwich based Garden Designer Pip Smith, this promises to be a timely evening of great advice and shared experience. In his own words "Design should consider and embrace the climatic challenges we all face. For a green space to be successful it must connect with the user and wider landscape, allowing room to grow and mature. The landscape's hidden attributes, its ability to soothe, restore, and to provide comfort, solace and reflection, all key elements to design."

A Head Gardener at a number of gardens over the years, Pip is perhaps best known for this role at Wollerton Old Hall.

Bring along your friends and neighbours, everyone welcome at the Trefonen Garden Club!

And remember the Annual Plant Sale at the Village Hall, just two days later on Saturday 18th May from 9:30 a.m.

Contact: 01691 583 012; trefonengardenclub@gmail.com; www.trefonengardenclub.org.uk



LLOYD'S ANIMAL FEEDS

Agricultural Feed Specialists

Lloyds Animal Feeds is the leading independent animal food producer in the country.

The Company philosophy is to provide customers with the exact specification feed they need to maximise their profitability in the market place.

Head office:

**Morton, Oswestry, Shropshire, SY10 8BH, United Kingdom
01691 830741**

Trefonen WI:

Our speaker in April was Peter Dunhill on the topic: 'Shrewsbury Flax Mill and Maltings, Past, Present and Future'. Recognised as a building of architectural interest due to its claim to fame as the first iron-frame building and forerunner of skyscrapers, it has been preserved by English Heritage and Shropshire County Council.



Peter explained the growing of flax for either linseed oil from the seeds or flax fibres. He gave us flax stalks to 'heckle' (pull apart) and we were amazed at how even the finest fibre was incredibly tough and strong.

The processing of flax traditionally created a lot of combustible dust which, in the old brick-and-wood buildings, led to the destruction by fire of many factories. Industrialists took advantage of the skills and knowledge found in Shropshire to build a fireproof brick-and-iron factory, developing girders and more to support the weight of the floors. The building had its own gas boiler and was lit many years before Shrewsbury had power in the rest of the town.

Workers for the mill were recruited from the Shrewsbury workhouse (now Shrewsbury School), and further afield. Women and children as young as 7 worked up to 15 hours a day in the mill.

In 1886 the factory closed as a flax mill and started a new life as maltings where barley was germinated for the beer industry. The windows of the building were shut up or reduced in size to control the amount of light allowed in. Its life as a maltings lasted nearly 100 years and it was also used as a training centre in the two World Wars.

English Heritage acquired the site in 2005 and archaeological research began helped by Friends of the Flax mill of which Peter was a founder member. Now fully restored, the building is open to the public with a visitor centre, excellent cafe (on good recommendation) and tours. Upper floors have been converted into residential units with the vital iron supporting structures still visible in these modern homes.

- In 1813, the mill employed 433
- This increased to around 800 in the early 1840s
- Many of these were women and children, often from workhouses
- Samuel and Jonathan Downe remembered in 1832 how they had started work at the mill in 1813 at the ages of 10 and 7—knocked down with straps and dipped into cisterns if they appeared drowsy during their 15 hour shifts.

We're very lucky to have such a wealth of local history and to be able to learn about it in the friendly environment of WI. Don't forget that visitors and new members are always welcome.

May 9th sees the exciting open meeting for the drama performance of *Aggie*, based on the life of Dame Agnes Hunt. We look forward to welcoming you to the village hall for that (see poster on p.16).

But we're also looking ahead to the fabulous Hill Walk Weekend, specifically the Village Show on Sunday 26th May. Please see the poster on page 9 of the magazine for more details.

Please contact Victoria on 07773 364992 or v.gemmell@hotmail.co.uk for more information on any of the above.

Victoria Gemmell

theWI
INSPIRING WOMEN



Shropshire Wildlife Trust:

You may have seen details on our Facebook page of the SWT walk from Trefonen on 17th April. In May there is a Pond Dipping and Minibeast Hunt at Llanymynech Heritage Area, SY22 6EZ, 10am to 12 noon, Sunday 19th May.



Shropshire
Wildlife Trust

Please email oswestry@shropshirewildlifetrust.org.uk for more information.

Thinking of selling your home? Problem solved!

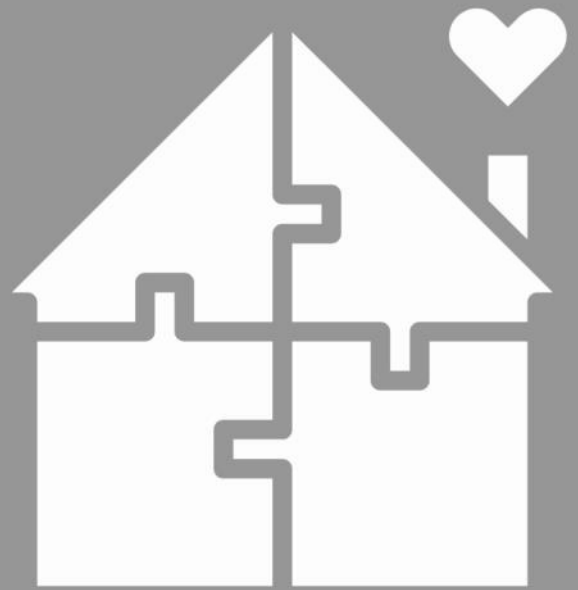
Receive our Marketing Package when selling your property with us:

- Professional photography
- Floor-plan
- Hybrid videoette

CALL: 01691 680044

www.woodheadsalesandlettings.com

Providing a professional, honest, and trusted service to our customers, since 2004



The Day Centre Club Oswestry



Day care for older people, providing a relaxed, friendly and welcoming environment for people

Please contact Sue Jones for more information.

Call 01691 650513 or 07854 511750, or visit www.daycentreswestry.co.uk

**JOHN
OSMAN**
Groundcare

John Osman Groundcare Ltd
The Yard @ Lindisfarne,
Maesbrook,
Oswestry,
Shropshire,
SY10 8QB

Sat Nav use 8QT

T: 01691 671100



WEB

SOCIALS



www.johnosman.co.uk



HOUSMAN TREE SERVICES

Fully qualified and insured,
covering all aspects of tree care

07377 328580 / 01691 753958

housmantreeservices@outlook.com

Harry Roberts



TREE CARE & LANDSCAPING

All types of trees carefully felled, pruned & topped
Apple, Pear, Plum etc

Conifer, Beech, Hawthorn hedges reduced in height

All foliage from trees cleared away

Hedges, Trees & Shrubs - trimmed and shaped

Stump grinding & Woodchipping

Fully Insured

Free quotes and advice, ask for

Harry - 01691 770054

07534 470670

harryroberts1245@hotmail.com



theWI
INSPIRING WOMEN

Trefonen WI presents

Aggie



The extraordinary story of Dame Agnes Hunt told in her own words

Performed by Alison Utting
with kind permission from Derwen College

Thursday 9th May 7.30pm (doors open 7.15pm)

Trefonen Village Hall SY10 9DY

£8 on the door (to include tea and biscuits)

All welcome

Food Bank Secretary vacancy:

The Board of Trustees at Oswestry and Borders Food Bank are looking for a new Secretary/Trustee to:

- Prepare and circulate an agenda (in liaison with Chair) prior to all meetings of the Board (usually 6 per year);
- Take notes during all meetings, assimilate all reports, prepare and circulate minutes of the meetings;
- Organise AGM (in liaison with Chair);
- Be involved in all decision making with regards to the Food Bank alongside all other Trustees.

This is an exciting opportunity to support the work of the Food Bank, which provides food and other essentials to some of the poorest people in our community, as well as working with partner agencies to provide more holistic support.

We will be happy to receive enquiries from anyone who is interested in the Secretary role only and does not wish to become a Trustee as well.

Are you interested?

For further details, please contact:

Tony Maude, present Trustee Chair - tonymaude66@gmail.com

Kath Davies, retiring Secretary - k.davies881@btinternet.com

or Liz Jermy, Manager - manager@oswestryandborders.foodbank.org.uk



Community Speed Watch:

I am very pleased to confirm that the Community Speed Watch schemes for Trefonen and Treflach are seeing results in terms of traffic speed reductions through our villages.

We are a team of local volunteers who have received training in the operation of a radar speed gun and consequent reporting systems from West Mercia Police.



We are finding that the majority of drivers adhere to the speed limits but there are a few who unfortunately are repeat offenders. We will continue to forward details of these to West Mercia Police who advise us that further action will be considered.

The purpose of the scheme is not to catch errant drivers but to encourage safer behaviour on our roads.

If you would be interested in joining the team, please get in touch. Adding just a few to our number will enable us to reduce the commitment of time to once a week or even less.

John Davies

BRIDGE PLUMBING

OFTEC REGISTERED

All domestic plumbing and central heating work undertaken including:
Oil boiler servicing, installation and commissioning

Please call Michael on:
Home: 01691 657826
Mob: 07790 301520

9, Martins Fields,
Trefonen,
SY10 9EP

Email: bridgeplumbing0001@gmail.com

S. Owen & Sons

YOUR LOCAL HEATING OIL,
COAL MERCHANTS &
Propane & Butane
BOTTLED GAS SUPPLIERS

“Prompt &
Personal Service
at Competitive Prices!!”

www.sowenandsons.co.uk

Telephone:
Llanymynech 01691 830315 or
01691 830163



**P & S Electrical
Contractors Ltd**

**DOMESTIC ~ COMMERCIAL
FREE ESTIMATES**

***ELECTRIC CAR CHARGING
POINTS FITTED***

**Rewires, New Builds
Landlord Safety Checks (EICR)
General Electrical Work
Fuse Board Upgrades**

ALL Work Tested & Certificated

**CONTACT STUART
07710 664 254 / 01691 238039
pandselectrical27@gmail.com**



ValentineWindow CLEANING

www.valentinewindowcleaning.co.uk

0 7 5 4 0 6 4 8 5 6 5



WINDOWS | SOFFITS & FACIAS | CLADDING | CONSERVATORIES

GUTTER CLEANING | JET WASHING | SOLAR PANELS

Barley Mow Inn



Trefonen, Oswestry

Wide selection of Real Ales, Lagers, Ciders, etc.

**Open fire, Pool table,
Darts, Dog friendly.**

Function room (seats 50) for free hire.

We will be serving food again from mid-May

Opening hours:	Monday	Closed
	Tuesday	5.00 - 10.00pm
	Wednesday	5.00 - 10.00pm
	Thursday	5.00 - 11.00pm
	Friday	3.00 - 11.00pm
	Saturday	12.00 - 12.00pm
	Sunday	12.00 - 8.00pm

Barley Mow Inn

Chapel Lane, Trefonen, Oswestry, Shropshire, SY10 9DX

01691 656889

email: barleymowinn@mail.com

Fb: Barley Mow



Trefonen and District Garden Club

***** TREFONEN GARDEN CLUB *****
***** GRAND ANNUAL PLANT SALE *****

TREFONEN VILLAGE HALL SY10 9DY
SATURDAY 18th MAY 2024

9:30a.m. onwards
Refreshments available
£1 entry in aid of Hill Walk Charities

**Donations and setting up – come to the
Village Hall on Friday 17th May from 4:30p.m.
to 6:30p.m. or bring plants early Saturday
morning, from 8:30a.m.**

**Enquiries 01691 583 012 or email
trefonengardenclub@gmail.com**





QUIZ NIGHT

**SATURDAY 18TH MAY 2024
7PM
LLANYBLODWEL AND PORTHYWAEN MEMORIAL
INSTITUTE**

**£10 PER TEAM
(MAX 6 PEOPLE PER TEAM)**



**CALL TO BOOK A TEAM
FOR MORE INFO OR TO BOOK, PLEASE CALL: 07432 891249**

LAWRENCE'S

COPYING
PRINTING
INVITATIONS
WEDDINGS
ORDER OF SERVICE
FUNERAL
ORDER OF SERVICE
BUSINESS CARDS
FLYERS
BANNERS

NEED SOMETHING PRINTING? EMAIL IT
OVER AND IT WILL BE READY FOR YOU
TO COLLECT

Find us on



Contact us on 01691 238039
Email lawrencedirect20@gmail.com

OUR WORKING HOURS ARE:

MONDAY 9AM - 3PM
WEDNESDAY 9AM - 3PM
FRIDAY 9AM - 1PM

WE HAVE LEFT CHURCH
STREET
HOWEVER WE ARE STILL
IN OSWESTRY
Free Parking -
Easy Pick Up

www.supportmycomputer.co.uk



PC/Laptop Stopped running or running slow
or need a replacement?

Call Justin, on (01691) 830822 or
(07772) 596029, for low fixed prices from
£19.95

Spyware removal/installation of leading edge
spyware prevention

Virus removal/installation & Complete Sys-
tem Rebuilds

Performance Tuning & Business PC Support

Hardware/Software Installations and Training

Upgrades and Automated Backup

Remote Support/Annual PC health Check
also available

Wireless Networking and New PC/Netbook/
Laptop sales see website

Your advertisement here?

We are hugely grateful to
all our advertisers - the
income from whom allows
us to distribute the printed
magazine free of charge.

If you, or anyone you
know, would be interested
in promoting their business
through these pages, then
please get in touch with
the editor (contact details
on page 2).

Chimney Sweep

[Formerly John Thompson retired]

Specialising in the cleaning of:

All domestic fires, AGAs,
Rayburns & Stanleys

Blockages Removed

Bird Guards supplied

Advice & Problem Solving

Fully Insured

Certificates Issued

Ross Hines

24 The Wheatlands

Baschurch

SY4 2DN

T: 01939 768319

M: 07837 745571



Morgans

Doors & Floors

CALL NOW ON
01691
657700

WE HAVE OVER
70 Doors
IN OUR SHOWROOM



Acoustic Panelling



Wall Panelling



Skirting & Architrave



Door Furniture



Extensive Range Of Flooring



✉ JO@MORGANSLTD.COM

📍 MILE END BUSINESS PARK
OSWESTRY, SY10 8NN

🌐 WWW.MORGANSDECORATORS.CO.UK

The Community Cafe

Trefonen Village Hall

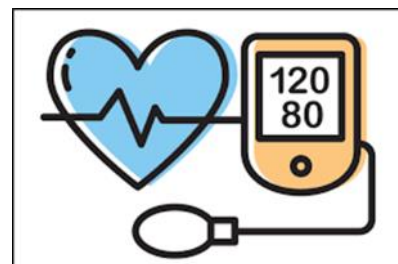
Tuesday mornings, 9.45am - 11.30am

A place to meet with friends and enjoy a cup of tea or freshly brewed coffee and homemade cakes. If you have never been before or are new to the area we would love to see you.

~~~~~

In conjunction with Qube the next pop-up blood pressure testing will be on 28th May from 10.00am.

Ideal opportunity to have your blood pressure checked.



~~~~~

Could you spare a couple of hours on a Tuesday morning to help at the cafe every 4 to 6 weeks? We would really appreciate it if you could.

Please contact Chris Kirk on 688595 or email kirk.garden@btopenworld.com

Café Rota:

Date	Open	9.45	10.15 - 11.30	Close	Cakes
7th May	Jeremy	Nyria	John, Diane, Kath	John	Nyria, Diane
14th May	Malcolm	Chris	Val, Dawn, Linda	Val	Chris, Linda
21st May	Peter	Carol	Pat, Ruth, Marilyn	Pat	Carol, Pat
28th May	Jeremy	Half-term	Nyria, Rita	Jeremy	Nyria, Rita

Foot Health Clinic: May 7th.

Contact Lorraine on 07714 244359 to make an appointment.

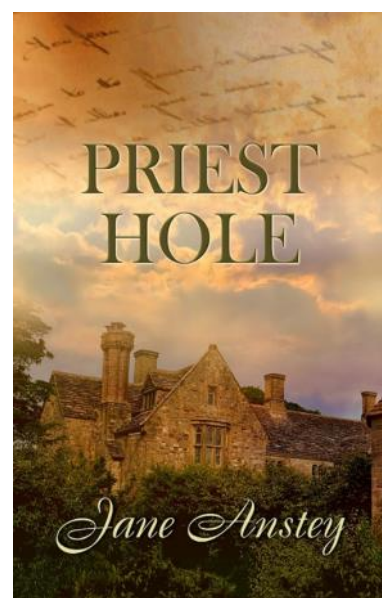
Advertisement:

'We simply must get into that priest hole.'

When eerie wailing is heard in an ancient manor house in Cornwall, dark family deeds and long-buried secrets come to light.

Priest Hole is available from Amazon, to order from bookshops, or from the publisher, at <https://wingsepress.com>.

Please contact the author to arrange a personal signing: jane.anstey@gmail.com



Quiz:

Many thanks to Norma for supplying this month's quiz which, for a change, is cryptic in nature. All of the following have answers that are also the names of sweets/confectionary.

E.g. Wobbly Infants = Jelly Babies

1. High class thoroughfare
2. Money making royalty
3. The red planet pub
4. Clever people
5. Various black items
6. Sport for princes
7. Feline equipment
8. Garden flowers
9. Assorted girls
10. Edible fasteners
11. Sly giggles
12. Talk quietly
13. Big bus
14. Gem orchard
15. Spin around
16. Small dog
17. 100% Au
18. Istanbul happiness
19. Out there (look up at night)
20. Even more out there!
21. Big cat's pub
22. One who wanders
23. Musical bard
24. Lots of parties
25. Outside meal
26. Locals from Malta
27. Reward
28. Ten cent pub
29. Toothless drink
30. Sweet tooth cleaner
31. Pub pins
32. Nine, ten, eleven ...
33. Disturbs the surface
34. Pernod sphere
35. Pig's tail, perhaps
36. To peel off
37. Fireworks in the sky
38. French goodness
39. Little rocks
40. Wibbly wobbly vegies
41. Cocoa grapes
42. Refreshing
43. Brave men
44. Dark wizardry
45. Sweet valentine
46. Fruit falls

Answers on page 53

Thanks from Revd Kathy:

I just wanted to say a huge thank you to you all for all that you did to make the Farewell party the happy and heartfelt do that it undoubtedly was. It will be a lasting memory of the years spent working with and alongside of you. I didn't have an e mail address for everyone so please do convey thanks to everyone you know who helped from each parish and thank the parishioners for their very generous gift – I will delight in looking for and hopefully purchasing my chair to put where I may sit and pray daily, be inspired for my sermons and creatively seek new ways of bringing God to people, and I will think of you all when I do it.

Many thanks also to ...

- the working party in charge of tables etc;
- the food party, serving it and providing it as well as washing up, especially Jane who coordinated;
- the cake and fudge party (if any left I will willingly help you out by finishing it as I love homemade fudge), Lin and Janet;
- the bar manger and staff;
- the decorating party, both display and flowers;
- the DJ Alex;
- the photographers, Alec, Lin and Jann;
- the publicity and invitations people, Lizzie and Jann and Malcolm;
- the Presentation Group, K and Malcolm;
- all the parishioners who came and those who didn't, for the generous gift and good wishes;
- last but by no means least the organiser – Lizzie.

Hope I haven't left anyone out.

Thank you all.

With grateful thanks and all good wishes,

Kathy



News from St Michael's Llanyblodwel:

Kathy took her final service in Llanyblodwel on Easter Sunday. It was a lovely service, followed by coffee and refreshments, while the children had a Easter egg hunt. We all wish Kathy all the very best in her new ministry in Australia.

We are planning a few fund raising evenings:

- A social event centered around a talk or presentation on the first Friday in the months from June through to September. This would be an evening event with refreshments starting at 8pm.

Themes:

- ◊ June: Natural History
- ◊ July: Culture
- ◊ August: Local History
- ◊ September: Food

These will take place in the Church starting at 8.00pm.

- A sponsored walk in July; more information in the June magazine.

The services are now being arranged for the coming weeks. Details will be published in the magazine each month, and also a list will be put on the notice board by the lych gate leading to the church.

Cafe Blodwel will be the first Wednesday in May (1st May), from 10.30am to 12.30pm. Come and join us for a coffee, cake and a chat.



Eirlys Williams

Our Benefice Administrator:

At the end of March we thanked and said good bye to Michelle Scott, who had been our Benefice Administrator for six years. She has very kindly offered to help us through the hand over period. We now welcome Helen Parish, from 1st April 2024, to the role. Helen revealed in interview that this was not the first time she had thought of applying and she was very clear about wanting to get to know people and support all the parishes. She will probably turn up at various coffee mornings!

The benefice administrator is the person to contact if you want to book a funeral, baptism or wedding in either of the churches. Helen is planning to spend five hours in the Benefice office at the Rectory on a Thursday from 9.30a.m. If you need to see her it would be helpful if you were able to ring before going: 01691 590025. Thank you.



*K Kimber
Convener of the Lay Chairs' Group*

Thought for the month:

There are times when an ability to tell the future would be an asset. At our APCM last year a volunteer to be Lay Chair was needed. Knowing that the main call on such an appointee was to chair a PCC meeting if the incumbent was unable to attend, I volunteered. What I did not do was 'do my research' and now find myself involved with the other Lay Chairs in the work to ensure a smooth interregnum (*Vacancy period - Ed*) and the decisions to be taken about the future of the benefice!

This month we celebrate the Ascension of Christ to heaven at the end of his earthly ministry. He would still be with his followers by the power of the Holy Spirit but he would no longer be a physical presence. Unlike for the members of the Border Benefice today, wheels were not slowly put in motion to provide a physical equal to slip into his place. Disciples like Peter were faced with becoming leaders of the believers and were tasked with growing and tending his church. Their roles often placed them in physical danger. That the believers were united in faith and love was vital if this young church was to survive.

We lack their experience of having spent a few years listening to and learning from Christ himself, but we can rely on him and rejoice with the diocesan authorities in the power of his spirit to help us to find the right way forward if we work together for the good of our parishes. Our problems may not include physical danger but ignorance, prejudice, apathy and other human weaknesses may be dangers we must guard against in the coming months.

*Paddy Martin (O.P.W. Martin)
Worship Leader and Lay Chair, St Agatha's Llanymynech*



Prayer Chain

If you would like prayer for an immediate need, e.g. an emergency situation, you can ring any one of the people below. Your message will be passed to each person in the chain (who is available at the time) and we will pray for your need in complete confidence.

Betty Steele	652170	Carol Pickering	238561
Chris Kirk	688595	Jill & Joan	656456
Linda Gladman	671363	Rita Mathias	657934

SOFA Club:

This month we will be holding one meeting of SOFA Club and we will look at Promises. The definition of a promise is: to **tell** someone that you will **certainly** do something.

Throughout our lives we make all sorts of promises, from the time we are young, perhaps as a Brownie or Cub, to wedding vows, and many other promises, maybe just promising to call someone every week, do their shopping, clean the car – the list goes on and on; the hard bit is sticking to the promise.

Are you able to make a promise and keep it? Dementia Awareness Week runs from 13th to 19th May; as part of this week could you make a promise to do something? You are maybe saying 'what can I do?' Just a few ideas:



- Make a regular contribution to supporting people with dementia
- Be a volunteer with the Alzheimer's Society or take part in one of their fundraising events.
- Perhaps your promise could be to ask how we make our Church more Dementia Friendly and be part of the SOFA Club.

If you would like to know more, please contact Lizzie (Churchwarden Morton) 07713 083002. Alternatively, just come along on Thursday 16th May, 2.30–4pm, Llanymynech Church Hall.

Why give to charity?

Whatever else might be said about the Hill Walk Weekend, there's no denying that it raises a lot of money for what we categorise as 'good causes'. But why should we give in this way? Some thoughts:

- Donating to charity is a major mood-booster. The knowledge that you're helping others is hugely empowering and, in turn, can make you feel happier and more fulfilled. Research has identified a link between making a donation to charity and increased activity in the area of the brain that registers pleasure – proving that, as the old adage goes, it really is far better to give than to receive.
- Research shows that social conscience was the most widely-cited reason to give to charity. Whatever type of charity work people supported, 96% said they felt they had a moral duty to use what they had to help others – a sentiment very much rooted in their personal values and principles.
- Having the power to improve the lives of others is, to many people, a privilege, and one that comes with its own sense of obligation. Acting on these powerful feelings of responsibility is a great way to reinforce our own personal values and feel like we are living in a way that is true to our own beliefs.



Why did the donkeys cross the road?

.... It was Palm Sunday, and they were on their way from the village hall to the Church Family Event!



As we walked with the donkeys, we remembered Jesus riding into Jerusalem for the last time on a donkey, and then re-told the story in church with Makaton signing and songs, and reflected on the sort of king Jesus is ... and there were crafts, games, BBQ food and cake and, of course, an Easter Egg Hunt.

A special thanks to all those who made it happen, and to Donna and Co. who brought along their lovely donkeys.

Thank you to everyone who supported it. We had a good turnout and, amazingly, the sun shone! We hope you all enjoyed it.

Linda Gladman



See also the photo on the back cover - Ed.

Bryn Offa Church of England Primary School



Rockwell Lane, Pant, Oswestry, Shropshire, SY10 9QR

admin@brynoffa.shropshire.sch.uk

Tel: 01691 830621

I hope that everyone had a lovely Easter break, it was lovely welcoming staff and children back to Bryn Offa for the final term of the academic year.

I was so pleased to see so many people taking part in the Bryn Offa Easter Trail. If you were one of the lucky ones who found all 12 letters then, after some trial and error, I am sure that you managed to successfully unscramble the words '**Chocolate Egg**'. Easter seems a distant memory as we move into May which signals exams season for our Year 6 pupils.

The Year 6 pupils have been working incredibly hard all year in order to prepare for the SAT tests which take place during the week of May 13th. All pupils have been reassured that all they need do is their best and then nobody can ask any more of them. I am sure that many of you can remember sitting tests in school and what a stressful time it can be for children. I recently spotted this poem online and felt that it is so important to keep it in mind, especially over the next few weeks.

SATs don't measure sports, SATs don't measure art,
SATs don't measure music, or the kindness in your heart.
SATs don't see your beauty, SATs don't know your worth,
SATs don't see the reasons you were put upon this earth.
SATs don't see your magic, how you make others smile,
SATs don't time how quickly you can run a mile.
SATs don't hear your laughter, or see you've come this far,
SATs are just a tiny glimpse of who you really are.
So sitting at your table, with a pencil and your test,
Remember SATs aren't who you are, remember you're the best.

May is also an exciting month for our Year 3 and 4 pupils as they have two sessions with Arthog Outreach. Our Year 3 pupils will be rock climbing and caving on Llanymynech hill, and the Year 4 pupils take part in a canoeing and bushcraft session near Pool Quay. These days are one of the first tastes of the Bryn Offa 'outdoor and adventurous' curriculum for our children. Pupils who have taken part over recent years in these activities always talk about them with enthusiasm as they are a real highlight in the Bryn Offa calendar.

I hope that you all have a wonderful month of May!

Keep Your Light Shining,

Mr Gareth Jones

Acting Head teacher,

Bryn Offa C of E Primary School.



Beth Bakes...

Bespoke, handmade
cakes of distinction.

Bethbakes.co.uk

Find me on Facebook:

@cakesbybethbakes

01691 791571 07811 321038

Email: beth@bethbakes.co.uk

Maths Tuition

up to

GCSE

KS3/4

Blodwel Bank, Treflach

Individual Tuition

Qualified, Experienced Teacher and Tutor

DBS Approved

English and Welsh Specifications

For further information contact Ruth Clark
07598 713047 / ruthannclark@outlook.com

TREFONEN INDOOR BOWLING CLUB

We are looking for new members to join our friendly club.

Would you be interested?

We meet at Trefonen Village Hall on Wednesday evenings at 7.15 until 9.15,
starting on 6th September 2023

For further details contact Kath Barclay on 01691 828587 or just come along.

First evening free.



OZLOO'S
SPECIALISTS IN PORTABLE
TOILET HIRE
01691 772904
WWW.OZLOOS.CO.UK
ozloos@btinternet.com



Bed & Breakfast Camping

Siobhan & Neil

01691 900537 or
07531 808944



At the bottom of
Candy Woods

oldmillcandy@gmail.com
www.oldmillcandy.co.uk

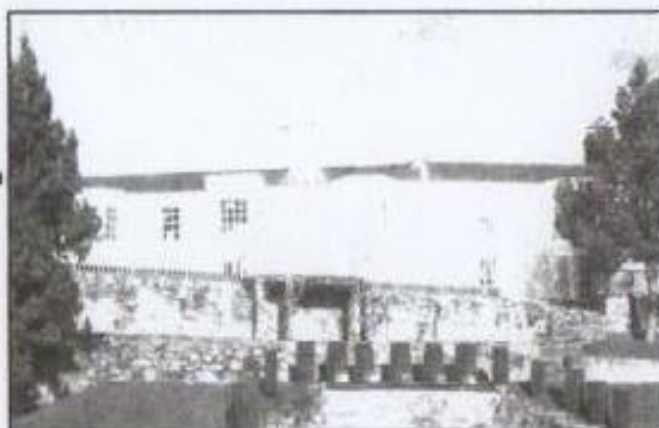
Bryn Tanat Hall

an exclusive venue for an exclusive wedding

A family owned and managed 17th Century country Hall with 10 bedrooms set in 3 acres of terraced riverside woodland gardens.

The Terrace Room for 20 to 70 extends with a marquee for up to 250 people. Five star accommodation, peace and privacy will ensure close family and guests really enjoy the experience.

To arrange a private viewing please contact Susan Martin.



01691 828 266
www.bryntanat.co.uk



Trefonen and District Garden Club

Monday morning Hoe
Tuesday morning Mow
Wednesday comes, it's often raining
Thursday spend a day complaining
Friday's highlight, great adventure, off to a garden centre
Just to look, not to buy, prices there are just so high
Weekend compost and organic feeds
One thing that's been growing are the weeds
So it's Monday morning Hoe

Anon



Let's hope that by the time you are reading this we will be having some fine weather. It seems ages ago that we had a decent spell of dry weather, when you could have time in the garden without having to dash out and do a few jobs making the most of it before it rained again. I know, the next thing we will be saying is it is too dry and we need the rain.

With the wet weather we have been experiencing, those of us who garden on heavy soils are waiting for the ground to dry out enough so as to be able to work and feed it. By April/May my compost bin would normally be empty having spread its wonderful contents mainly on the vegetable patch, around fruit bushes and trees and the roses, but as I write this, I have barely touched it. I know with all this wet weather, nutrients will have been leached out of the soil and they will need replacing if plants are going to grow successfully. We should give a thought to the farmers who already are facing many challenges to produce crops and food to feed us, added to which we have had a very wet Spring so far and the impact that that must be having on them.

May is one of those busy times in the garden, when everything is looking fresh and lush. If you grow your own plants then by now you will have tender plants hardening off, probably running out of space until ready to plant in their final positions, and hoping there isn't a late frost.

If, like the above rhyme, you think garden prices are too high, then on Saturday 18th May the garden club will be holding their annual plant sale, where prices are always reasonable and the most desirable plants always sell out fast. Please see advert elsewhere in the magazine for more details. Look forward to seeing you there.

For more general information go to www.trefonengardenclub.org.uk

Chris Kirk

Seeking Slowworms:

There's often a secret to be found within a churchyard or cemetery: slowworms may be living there, rarely seen by visitors as they tend to hide within the vegetation and don't emerge to bask in the sun like other reptiles. Slowworms are not particularly slow and they are



not worms, neither are they snakes. They are actually lizards without legs and, when warmed up and active can be pretty nippy! Slowworms hunt in hidden places such as compost heaps, thick vegetation at the base of a wall or hedge and within piles of logs or stones. They catch slower moving prey like slugs and can 'drop' their tails to escape predators, a characteristic of all lizards.

May is a good time to look for them and the easiest way to do this is to put out some pieces of old roofing material, about 50cm square. You can use corrugated tin, but this can have sharp edges, onduline is better and a supplier may give you some offcuts for free. Following a conversation with those who manage the site, place a few of these squares in areas that catch the morning sun and are away from paths, perhaps in rougher vegetation such as tussocky grass. Slowworms will go under the squares to warm up in the mornings before going out to hunt and may be there at any time of day in colder weather.

Check the squares about once a week, lifting one side carefully and looking underneath. Try and check between 8:00 and 10:00am for best results as this is when the animals are warming up. You may be rewarded by a slowworm and also many other creatures such as worms, beetles or woodlice. Why not take a quick picture as the square is lifted, before too much scurries or slithers off! It may take animals a while to find the squares so be patient, having more squares gives a better chance of seeing slowworms.

Churchyards and cemeteries are havens for reptiles and also amphibians such as frogs, toads and newts and we're collecting information to better understand just how important they are for these animals. Please take a photo using the iNaturalist app or let us know what you've seen via email if you don't use iNaturalist. You can keep checking for slowworms from April or May through to September. Why not include a peep under the square as part of a Churches Count on Nature event during Love Your Burial Ground week - 8th and 16th June.

All the best, Harriet

Harriet Carty, Diocesan Churchyard Environmental Advisor,
harriet@cfga.org.uk;
www.caringforgodsacre.org.uk

(Individuals and groups in the diocese receive 20% members discount on all CfGA materials. Use the discount code: diomem22)



Morgans

Oswestry

GARDEN MAKEOVERS WITH MORGANS



- ✓ WIDE RANGE OF GREENHOUSES
- ✓ BESPOKE OUTDOOR BUILDINGS
- ✓ DESIGN SERVICE WITH THE TEAM

EVERYTHING YOU NEED
TO TEND TO YOUR GARDEN
THIS SUMMER



✉ SALES@MORGANSLTD.COM

📍 MILE END BUSINESS PARK,
OSWESTRY, SY10 8NN

☎ 01691 671489

🌐 WWW.MORGANSLTD.COM

Massage Therapist



Integrated Holistic Therapies

Rosmarie Starck is a highly experienced massage therapist offering a wide range of treatments tailored to your needs whether it's general relaxation, clinical massages for specific muscle issues or chronic pain conditions.

- * Holistic Medical Massage
- * Reflexology
- * Aromatherapy
- * Reiki
- * Hopi Ear Candles
- * Hot Stone Massage
- * Trauma Discharge Therapy
- * Indian Head Massage
- * No Hands[®] Massage

Special Introductory Offer

Please contact us on 01691 659809 / 07554 017632 or email rosmariestarck56@gmail.com

Classical Yoga Trefonen and Pant



New Term Starting
4th September 2023

Monday Morning 10.30-12, Pant Memorial Hall
Thursday Morning 10.30-12, Trefonen Village Hall

Contact: ruthannclark@outlook.com / 07598 713047

Everyone welcome
Please bring your own mat
£5 per session

Tanat Foot Care

Registered Foot Health Practitioner



Treatments in a modern clinic
situated on the Shropshire/Welsh border.

- Toenail Trimming
- Caluss
- Cracked Heels
- Corns/Verrucas
- Diabetic Foot Care
- Ingrowing Toenails
- Fungal Nail
- Athlete's Foot

For an appointment, please contact Lisa on

07891087394

Email: tanatfootcare@hotmail.com





A Photo from the Past:

My friend Doug, who lives on Quarry Lane, Nantmawr, likes to reminisce about the old days and showed us this copy of a photo from the 1930s which the previous owner of his house had given him, complete with names and notes about who everyone was. The chapel folks seem to have come from Pant, Oswestry, Llanyblodwel, Trefonen and Nantmawr so some of you may recognise them.

Jenny Hoare

Nantmawr Chapel Fete, Tanllywn Field - c. Summer 1938

With grateful thanks to Joyce Jones, formerly of Mount Zion, for providing all of the names.

<i>Name</i>	<i>Residence in 1938</i>
<i>Back row: left to right:</i>	
Mrs Evans	Treflach
Mrs Hughes	Jubilee, Llanyblodwel
Mrs Ted Jones	The Laurels, off Blodwel Bank
Mrs Richards	Sycamore Cottage, Quarry Lane
Florrie Owen	Treflach
Mrs Joe Lloyd	Prospect Farm
Mrs Evans	Cefn Farm
Mrs Gwen Dyke (nee Roberts)	Draengwynion
Mrs Lewis	Treflach
<i>Second Row:</i>	
Miss Morris	Quarry Shop, Craig Fach or Craig Fawr, Quarry Lane
Maggie Davies	Mount Zion, Quarry Lane
Mrs Haslam	Treflach
Mrs Evans	Treflach
Miss Money	Oswestry
Mrs Egerton	Treflach
Mrs Fox	Treflach
Mrs Thomas	Vron Cottage, Quarry Lane
Mrs Carsley	Stone House, Quarry Lane
Mrs Williams	Llanyblodwel
Mrs Davies	Treflach
Mr Fox	Treflach
<i>Third row:</i>	
Mrs Jones	The Bank, Nant Lane
Mrs Lloyd	Fronoleu
Mrs Ellis	School House
Mr Ellis	School House
Mrs Arafnah Thomas	Oswestry
Mrs Davies	The Manse, Nantmawr
Rev J H Davies	The Manse, Nantmawr
Bob Watkins	Tanllwyn, Nantmawr
Allen Jones	Mount Zion, Quarry Lane
<i>Front row:</i>	
Jim Richards	Sycamore Cottage, Quarry Lane
Edwin Jones	Blodwel Bank
Balfour (Balphy) Davies	The Manse, Nantmawr
David Hughes	Stone House, Nantmawr Bank
Mary Hughes	Stone House, Nantmawr Bank
Joan Lloyd	Prospect Farm
Tom Dudleston	Oswestry
Nesta Davies	Porthywaen

With apologies that we've had to reproduce this list in such small type - Ed.



Local solicitors for every occasion



Get in touch today:

 01743 248545

 mail@hatchers.co.uk



Residential Property | Wills & Probate | Family Law
Dispute Resolution | Personal Injury | Employment Law
Business Law | Commercial Property | Agricultural Law





DATE FOR YOUR DIARY.....

LLANYBLODWEL COMMEMORATES !

80

D-DAY 6 JUNE 2024

7pm Start

BEACON LIGHTING 9.15pm

Llanyblodwel Village Hall

Food, Bar and Fun for all the family!



OSWESTRY TALKING NEWS (OTN)

Charity No. 511634

OTN produces a weekly audible version of local news, mainly from the Oswestry Advertiser and local magazines and it is run by a complementary team of committed volunteers with varied skills. **Please help us keep this service running.**

Are you looking for an *interesting, volunteering opportunity* with a charity that provides a valuable service to individuals who are not able to read a newspaper?

We are sure that we have a role that would interest you.

- ◇ **Do you have an administrative background, have good people skills and would be interested in taking the lead in recruiting volunteers? Yes - OTN needs you. Commitment 2-3 hours per month**
- ◇ **Do you have an Information and Technology background and would be interested in directing and recording the weekly OTN editions? Yes -OTN needs you. Commitment- maximum 5 hours every 5-6 weeks.**
- ◇ **Are you a computer technician who can resolve hardware and software issues? Yes - OTN needs you. Commitment – as and when needed for when technical issues arise.**
- ◇ **Do you have a financial background? Yes – OTN needs you as Treasurer. Commitment – approximately 25 hours per year.**
- ◇ **Can you use a computer to join our Distribution Team? Yes – OTN needs you. Commitment - 2-3 hours every 4 weeks on rota system.**
- ◇ **Do you enjoy managing change and have experience as a Trustee and Chair? Yes – OTN needs you. Commitment - 5-6 hours per month.**
- ◇ **Do you have a marketing background, public speaking or sales who would enjoy promoting OTN to volunteers and clients who would benefit from our weekly productions? Yes – OTN needs you. Commitment - 5-6 hours per month.**
- ◇ **Do you have an editing or administration background and have experience at collating articles from local magazines for an additional monthly supplement? Yes – OTN needs you. Commitment – 4-5 hours per month**

Email Oswestrytn@outlook.com to learn more about these opportunities.



Independent Financial Advice

We are a family run firm, offering a friendly unbiased service.
Drop in or call us for a free, no obligation chat about how we
can help

"We have been fortunate to practice in such a pleasant and welcoming place. Many clients have become friends and we have seen families grow and are delighted to help their children...and occasionally their grandchildren!"

John Davies

22 Willow Street, Oswestry, SY11 1AD
Tel: 01691 680845
www.johndaviesinvestments.co.uk

- Pensions - Equity Release
- Investments - Mortgages
- Protection - Financial Planning



Brook House Residential Home

Woodhill, Morda, Oswestry, Shropshire, SY10 9AS



Are you looking for a warm, friendly & helpful home in a beautiful setting?

Whether you need a long stay, respite or day care,
please telephone for a brochure or come and visit us.

Mrs Sian Edwards, Manager sian.edwards@brookehousecare.co.uk T: 01691 654167

David Davies & Sons

FUNERAL DIRECTORS

ESTABLISHED 1840



A caring, compassionate
and discreet service from a
family business since 1840

1 Upper Church Street
Oswestry - SY11 2AA

Oswestry 01691 653116 (24 hrs)
www.daviddaviesandsons.co.uk



W. E. Price

FUNERAL DIRECTORS

We always provide the highest level of care, compassion and professionalism.

Available 24 hours a day

Pre-paid funeral plans available

01691 652995

www.wepricefuneraldirectors.co.uk

OAKWOOD, SALOP ROAD,
OSWESTRY, SHROPSHIRE, SY11 2RN



FUNERAL PLANS FROM

Golden Charter

Smart Planning for Later Life



On your doorstep

The two previous walks in this series would take most people perhaps around an hour to complete. This one's longer – you need to think of giving it half a day. It will take you to a small lake that you might not have known existed, a delightful woodland walk, and a church and churchyard that are full of surprises.

Using your preferred route, drive to Llansilin. Take the turning off the road through the village that is directly opposite St Silin's church (btw, a Grade 1 listed building – worth a visit in its own right). After about half-a-mile you'll find what looks like a fork in the road, but the one to the right is for farm use only, so keep left. About half-a-mile later the road drops down to Glan-yr-afon (too small even to call a hamlet), turn right here.

You might be thinking that you've been going along some rather narrow lanes. Well, as they say, you ain't seen nothin' yet. If you should meet anyone coming the other way in the next few miles, your reversing skills may be put to quite a severe test. After about a mile-and-a-half, passing the holiday cottages at Moelfre Hall Barns on the way, you'll reach the hamlet of Moelfre. Almost as soon as you arrive, you'll find a parking area on your left. (There's nowhere else to park – don't bother looking.)



Continue from here on foot, and Llyn Moelfre will come into view just over the brow in the road. As you get near, take the lane to the left and walk around three sides of Ty-Cwch (Boathouse). Des res! This isn't always occupied, though I haven't found it listed as a holiday let, so



guess it's a second home. Walk on around the lake until you reach the gate and stile that give entry to Pant yr Eos wood. Make sure you read the small inscription plate just inside the gate and pause to ponder the tragedy that it recalls.

The wood has something to offer during every season – I found banks covered with primroses in March. But if you go in May you may end up thinking – as I did – that this could be the best bluebell wood anywhere in the area. Turning right from the gate, you'll find numerous paths to follow, with the choice of a fairly easy route alongside the lane or others going uphill if you're game. (The usual applies – it can be muddy in places.) Almost any of the paths will eventually lead to the far corner of the wood where there's a stile back onto the lane. The Woodland Trust website states a total area of 21 acres.



You've now got a choice. You can go back, either through the wood or along the lane, or you can complete a walk all the way around the lake. For the latter, a well-signposted path leaves the lane by the house called 'The Gorse' and crosses the valley towards the red-brick house with a patio on stilts. Once on the other side, walk along the lane back to your car.



At this point, I could have said "That's all folks" and sent you back home. But I can't recommend strongly enough that, having come this far, you go on. Drive past the lake, keeping it on your left. Shortly after, take the right fork in the lane. If you enjoy listening to the radio whilst driving, be prepared for a loss of reception here. After about a mile-and-a-half (it will seem further!) you'll reach Llangadwaladr.



St Cadwaladr's church is mentioned as early as 1291, though much of what you see today dates from the 15C and, you've guessed it, the Victorians. The 1891 census recorded that the overwhelming majority of the parish spoke Welsh - in fact, 88% knew no English whatsoever. Do go inside, read the story of the church and parish, and make a donation to its upkeep.

Outside, don't miss the headstone of Rev Kit Carter - a member of that small but most excellent category of vicars who is/was also a church bellringer. There's also the sundial - I come across many stone plinths in churchyards, but it's fairly unusual to find a bronze dial and gnomon intact. But it could be the avenue of yew trees that impresses you most. Some are estimated to be 1,000 years old and the largest has a girth of 7.35m.



Now you can go home. I suppose you could retrace your route, but do you really want to? If you want a driving experience that might just prompt a slight flow of adrenalin, ask your sat-nav to plot the shortest route to Rhydycroesau. Alternatively, drive on until you find junctions with signposts and follow them or, better still, refer to an OS map.

Meanderer.

The limitations of space make it somewhat inevitable that the photos which accompany this guide are small, making it difficult to see detail. Meanderer has kindly reformatted everything in a separate pdf file where the pictures are bigger and in colour and which includes a section of the local OS map. If you'd like a copy - perhaps to print for your own use - please email the magazine (address on the inside of the front cover).

Ed.

Morgans

Joinery

A Family Business You Can Trust



Mile End Business Park, Oswestry, Shropshire, SY10 8NN
Web: www.morgansltd.com

Tel: 01691 672013
Email: GD@morgansltd.com

Planning a children's party or a family celebration?

Why not book Trefonen Village Hall?
Lots of space and excellent facilities.

Contact:
Val Smout
Bookings Secretary
01691 657011



Trefonen Village Shop

SHOP & POST OFFICE OPENING TIMES:

Monday - Friday:	8.00 - 6.00
Saturday:	9.00 - 1.00
Sunday:	10.00 - 1.00

Telephone 01691 671208



You will find all the items you would expect in a convenience store, but if there is anything you would like Hazel to stock, please let her know and she will do her best!

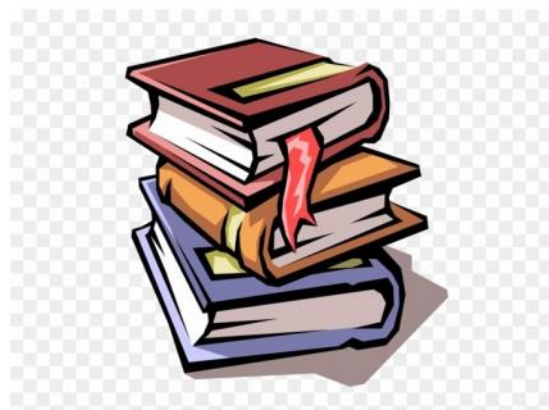
Please support ...

OSWESTRY CHRISTIAN BOOKSHOP

Lower Brook Street, Oswestry, TEL: 01691 661936

For all your needs -

- Cards and gifts for all occasions
- Christian books
- Various translations of the Bible
- CD's and Computer software
- Videos/DVDs for sale
- Bible commentaries, book tokens
- Children's books and second hand books
- Bible study books for you or groups
- Tea, coffee, biscuits available!



Email: info@ocbooks.co.uk

Web: www.ocbooks.co.uk

GARDEN RENOVATIONS:

Glenthorne, Trefonen

There are two 'rooms' in the garden at Glenthorne – the lower garden at the front (east) of the house, running down to the road, which you can see as you walk or drive past; and the upper side garden, at first floor level to the north of the house. All of it slopes fairly steeply, mainly downhill from west to east, but also from north to south. As a gardener, I consider myself very much an amateur – I enjoy gardening (as long as the weather is fine) but tend to try to work with what is there, adding and transplanting plants rather than redesigning from scratch, and I rarely know the names of the plants I grow!

The garden is not a large one, by Trefonen standards, but it had been badly neglected by the previous owners, and was full of 'thugs' – by which I mean comfrey, borage, ground elder, buttercups, common euphorbia and feverfew, among others. We arrived here in March 2021 in the clear knowledge that the first change that had to be made was cutting down of several enormous Leylandii and other 'weed' pine trees that were taking almost all the light out of the front garden and removing most of the goodness from the soil. Even the grass and the thug weeds refused to grow much, and the first couple of years the lawn needed very little mowing. Watching the tree surgeons at work was great fun!



The copper beech by the road is mature and dominates the front garden – there is little need for much else in the way of trees, though we did leave in place the weeping willow and the little Rowan by the road and one pine tree that stands on the northern boundary with our neighbours at Lark Rise. A small Thuya stands near that boundary and I've since added a Sumach sapling, while a red-leaved Japanese maple brought with me from Cornwall in a pot still awaits the right spot for planting out. I have made use of the many large stumps left from our own and earlier tree removal as stands for large pots, in which shrubs, perennials or bedding plants fill the space.

The front garden in particular is dotted with self-seeded shrubs, particularly flowering redcurrant, orange-flowered thorny berberis and rose of sharon, many of which I have incorporated into the design, since self-seeded shrubs so often grow the best, having chosen their own spot to germinate! The pH of the soil is fairly neutral, and acid-loving rhododendrons and azaleas will grow, but only in the front garden, in areas that have been permeated with pine needles and beech leaves, increasing the acidity, and even then I find they need mulching with ericaceous compost or leaf mould.

The area around the beech tree was gravelled in 2023, and to the north of it, near the fence, is a 'working area' where logs are sawn up/split and stored. Nearer the house the roots of the trees, both living and dead, criss-cross the area each side of the lawn, which means that any shrubs I buy have to be young, with a small root ball.

In the side garden there were walled terraces given over to herbaceous plants that had clearly not been divided recently, and in one corner an old Wendy House placed against rising ground and half-rotten as a result was being used as a store for wood and rubbish. Surrounding it was a mass of ground elder and euphorbia, topped with a large fuchsia bush that hadn't been pruned for years. The remains of a terrace beside the Wendy House showed that this had once been a place to sit and look south-west across the valley towards Moelydd in the distance.



Three years later, much of the herbaceous has been divided and moved or given away (the Garden Club stall in the churchyard over the summer proved useful) and summer vegetables grow in the raised beds, which enjoy sunlight from morning till night between April and September.

The Wendy House is now in pieces waiting to be re-erected in the front garden by the fence, and I am planning a greenhouse in the side garden for tomatoes, peppers and cucumbers.

Gardens take time to redevelop if you do it organically (in both senses of the word), so there is much to be done still. I'd like to pay tribute to my wonderful assistant, Nick Elliott, who comes every week to do the heavy work and offer helpful advice and suggestions. I'm enormously grateful to him for his help.

Jane Anstey

If you have been busy renovating, rescuing or redesigning a garden in the Trefonen or Llanyblodwel area, we'd love to hear from you. If you want to send the editors an initial email (trefonenparishmagazine@gmail.com) we can discuss how you would like to do this – a written piece such as this is perfect, but we can also do an interview or you can send me some notes and photographs and I will write it up for you (and of course send it to you for approval before publication). – Ed.

Letter to the Editor:

Dear Editor,

I guess that most readers can't have failed to notice this year's crop of new-born lambs in the fields around us. A welcome sign that spring is here, even if the weather doesn't seem to be keeping pace with the calendar!

Those who walk local public footpaths will see signs placed by farmers asking owners to keep their dogs on leads. These shouldn't be necessary, of course, but unfortunately there are the irresponsible ones who don't appear to realise the danger their animals pose. Your playful pooch is less distanced from its hunting ancestors than you might think. Under the Dogs Protection of Livestock Act 1953, if a dog worries sheep on farmland, the owner or the person in charge of the dog is guilty of an offence, the maximum penalty being a fine of up to £1000.

Two local farmers tell me that they've recently seen dogs off the lead, out of control and harassing their flocks. One has had to dispose of the corpse of a lamb which bore all the signs of a dog attack. Farmers are entitled to shoot a dog which is attacking or chasing farm animals, without being liable to compensate the dog's owner. I've yet to meet one who derives any pleasure from doing this, but why take the risk?

Name & address supplied.



P3:

Have been out and about again. Pictured right: Neil, Simon & Graham make this stile easier to cross. Artie and Llew were a little further up the lane repairing another one.



And here, on another outing, Llew and Simon cleared the undergrowth from this stile. It was so badly overgrown that, if you drove past, you might not have realised that it was there. Readers can be our eyes in cases like this - if you find a public footpath that's difficult to navigate for any reason, let any member of the group know - we might not be aware of it.

Poetry Group:

The Poetry Group members read poems on the theme of Travellers' Delights at their April gathering. Eleven poets were represented – Edward Thomas, Stephen Spender, Dylan Thomas, Rupert Browning, Seamus Heaney, Mary Chapin Carpenter, R.L. Stevenson, Thomas Hardy, Shukria Rezai, Hilaire Belloc and Edna St Vincent Millay! We chose one poem to share with you, by Edward Thomas.

The theme for our May meeting, on Tuesday May 14th, is 'Showtime', as per the Hill Walk weekend. New members are always welcome. We meet in different houses each month, so please contact Eiluned Parry (01691 655667) or Carol Pickering (01691 238561) for May's venue or for more details of our meetings.

Martin Fisher

Adlestrop

Yes, I remember Adlestrop –
The name, because one afternoon
Of heat the express-train drew up there
Unwontedly. It was late June.

The steam hissed. Someone cleared his throat.
No one left and no one came
On the bare platform. What I saw
Was Adlestrop – only the name

And willows, willow-herb, and grass,
And meadowsweet, and haycocks dry,
No whit less still and lonely fair
Than the high cloudlets in the sky.

And for that minute a blackbird sang
Close by, and round him, mistier,
Farther and farther, all the birds
Of Oxfordshire and Gloucestershire.

Edward Thomas, 1917

Answers to the quiz:

- | | | |
|-----------------------|----------------------|-----------------------|
| 1. Quality Street | 16. Yorkie | 32. After Eight Mints |
| 2. Mint Imperials | 17. Terry's All Gold | 33. Ripple |
| 3. Mars bar | 18. Turkish Delight | 34. Aniseed Ball |
| 4. Smarties | 19. Milky Way | 35. Curly Wurly |
| 5. Liquorice Allsorts | 20. Galaxy | 36. Flake |
| 6. Polos | 21. Lion Bar | 37. Starburst |
| 7. Kit-Kat | 22. Drifter | 38. Bob Bons |
| 8. Roses | 23. Minstrel | 39. Midget Gems |
| 9. Dolly Mixtures | 24. Celebrations | 40. Jelly Beans |
| 10. Chocolate Buttons | 25. Picnic | 41. Chocolate Raisins |
| 11. Snickers | 26. Maltesers | 42. Refreshers |
| 12. Wispa | 27. Bounty | 43. Heroes |
| 13. Double Decker | 28. Dime Bar | 44. Black Magic |
| 14. Opal Fruits | 29. Wine Gums | 45. Love Hearts |
| 15. Twirl | 30. Candy Floss | 46. Cherry Drops |
| | 31. Skittles | |

Church services in May:

	LLANYBLODWEL		TREFONEN	
Sun 5	6th of Easter	11.00am	9.30am	MORNING WORSHIP
		MORNING WORSHIP Leader: Abie T	Welcomers: Victoria G & Rosmarie S	
			Acts 10: 44-end	Jill F
			1 John 5: 1-6	Shirley H-J
			John 15: 9-17	Leader: Peter W
Sun 12	7th of Easter	11.00am	9.30am	MORNING WORSHIP
		HOLY COMMUNION Rev'd Adrian Bailey	Welcomers: Pat & Graham D	
		Leader: Abie T/Rebecca C	Acts 1: 15-17, 21-end	June B
			1 John 5: 9-13	Helen P
			John 17: 6-19	Leader: Chris K
				Flowers: June B
Sun 19	Pentecost	11.00am	9.30am	HOLY COMMUNION
		MORNING WORSHIP Leader: KK	Welcomers: Helen F & Helen P	
			Acts 2: 1-21	Helen F
			Romans 8: 22-27	Jeremy G
			John 15: 26-27 & 16: 4b-15	Leader: Rev John Tranter & KK
Sun 26	Trinity Sunday	11.00am	9.30am	HILL WALK SERVICE
		MORNING WORSHIP Leader: Rebecca C	Welcomers: Barry & Sue E	
			Isaiah 6: 1-8	Readers TBA
			Romans 8: 12-17	
			John 3: 1-17	Leader: Linda G & Helen F
				Flowers: Kath H

The above details were, we believe, correct at the time of going to press, but we suggest you keep on the lookout for changes in e.g. Pew Sheets. Note that there will be no service in the Benefice on Ascension Day (Thursday 9th).

Local contacts:

Jubilee Club	Alwena Martin	652791
Jubilee Field	K Kimber	679646
Llanyblodwel Parish Clerk	Amy Jones	llanyblodwelpc@gmail.com 829571
Llanyblodwel & Porth-y-Waen Village Hall Sec.	Bethan Cross	829368
Oswestry Rural (Trefonen) Parish Clerk	Kathryn Lloyd	07534 687663 clerk@oswestryrural-pc.gov.uk
Pre-School: ring 07817 641528 or	Shropshire Council	01743 254452
Trefonen Garden Club	Chris Kirk	688595
Trefonen Indoor Bowling Club	Kath Barkley	828587
Trefonen School	Cathy Dunleavy (Head Teacher)	652960
Trefonen Village Hall bookings	Val Smout	valsmout@btinternet.com 657011
Trefonen Village Hall Caretaker	Clive & Kath Roberts	671360
Trefonen Village website		www.trefonen.org

Some useful services:

Electricity (Scottish Power)	0800 027 0072	Citizens Advice Bureau	0800 144 8848
Severn Trent Water	0800 783 4444	West Mercia Police	0300 333 3000
Dwr Cymru (Welsh Water)	0800 052 0130	Childline	0800 1111
National Rail enquiries	03457 484950	Samaritans	116 123
HOSPITALS:		Drugs & Alcohol Helpline	0800 776600
RJ & AH Orthopaedic	01691 404000	National Domestic Violence Helpline	0808 2000 247
Royal Shrewsbury	01743 261000	Wales Domestic Abuse Helpline	0808 801 0800
Wrexham Maelor	01978 291100	Victim Support (National)	0808 168 9111
Princess Royal Telford	01952 641222	National Missing Persons Helpline	116 000

Mobile Library:

Every other Thursday, 9.05 - 9.40am at the Barley Mow Inn.

Next visits: 2nd, 16th & 30th May



Deadline for copy for the magazine is the 10th of each month.

This is important! It allows time for the editorial team to compile the contents, followed by printing in time for publication at a weekend towards the end of the previous month. The magazine can also be viewed online, usually a few days earlier, via either the Trefonen Village website (www.trefonen.org) or the Benefice website (www.borderparishes.org.uk).

Out and about ...

Why did the donkey cross the road?

Donkeys lead the Palm Sunday walk from Trefonen Village Hall to Trefonen Church for Easter activities.



Welcome back, Barley Mow!

Definitely not local!
We stumbled across this whilst looking for an image to adorn the front cover. It made us laugh - we hope you like it too. Ed.

