

PARISH & COMMUNITY MAGAZINE

For the communities of Coed-y-Go, Llanyblodwel, Nantmawr,



Porth-y-Waen, Treflach, Trefonen and places in between and beyond

FLAMING JUNE!

Produced by All Saints and St Michael's churches

Free of charge - please take one

Vol 34; No.5 June 2024

Border Group of Parishes

Llanyblodwel, Llanymynech, Morton & Trefonen



Rector: Currently vacant

Benefice Administrator: Helen Parish

bordergroupadmin@hotmail.co.uk

01691 590025

Helen will be in the office (in the Rectory) each Thursday, 9.30 - 2.30. Callers are welcome, but please phone first to let her know you're coming.

Benefice website:

borderparishes.org.uk

Webmaster:

Jeff Court:

itadmin@borderparishes.org.uk

Principal church contacts:

Trefonen:

PCC Secretary:

Helen Parish

helen-parish1@hotmail.co.uk

01691 670979

Churchwardens:

Bob Kimber

bobnkkimber@btinternet.com

01691 679646

Malcolm Kirk

malcolm.ref1170@gmail.com

01691 688595

Safeguarding Officer:

Jeanne Bradley

jeannemccarley@hotmail.co.uk

Llanyblodwel:

PCC Secretary:

Sioned Lindsay

sioned@gmail.com

07775 437101

Churchwardens:

Roger Taylor

roger@blodwell.com

07967 652217

Alec Gordon

alecgordon@btinternet.com

01691 828896

Safeguarding Officer:

Abie Tudor

abie.tudor@gmail.com

01691 830350

Magazine:

Editorial team:

Content:

Janey Fisher

Facebook page:

Isobel Fisher

Compilation:

Peter Woollam

Invoicing of advertisers:

Barry Evans

For all of the above, use:

trefonenparishmagazine@gmail.com

The magazine can also be read online and downloaded as a pdf file
(in full colour) at either borderparishes.org.uk or trefonen.org

From the Editor:

Our June issue is full of information and interest (as always, I hope!). We will all no doubt still be recovering from the joys of the Hill Walk Weekend when you read this, but events to look forward to in June include: Llanyblodwel's celebration of the 80th anniversary of the D-Day landings (see poster p.12), St Michael's ukelele evening with its memories of the Beatle George Harrison on the 7th (see p.13), the Flicks in the Sticks film at Trefonen Village Hall on the 15th, which this month is the comedy mockumentary *Swede Caroline* (p.39), rounded off by the Benefice Service on the 30th at St Agatha's Llanymynech, entitled intriguingly 'Praise and Pudding' (p.25).

We have our regular reports from village and Benefice organisations – the Trefonen WI (p.8), the Trefonen Garden Club (p.34), the Trefonen Poetry Group (p.38) and the Benefice Sofa Club (p.25); along with Ann Hindley's blog (p.4); our regular 'On your doorstep ...' feature, which this month describes a local walk via Woodhill (p.42); advance notice from St Michael's Llanyblodwel of their summer programme of social and fundraising events (p.23); news from Trefonen School (p.31); and a letter from the new headteacher at Bryn Offa, who takes up her post in September (p.30); another cryptic quiz from Norma Jones (p.21) and an update on recent activities by Offa Community Support (p.5). There is also a report on recent fly tipping in Little London Lane, Trefonen (p.5), which we hope will not begin a pattern of problems. In Thought for the Month (p.24), Betty Steele explains what is happening in the Benefice during the Vacancy created by the departure of Revd. Kathy, who sends us a heartfelt farewell 'bouquet of thanks' (p.23). We also have more information about bees – this time solitary bees in particular, as Harriet Carter, diocesan environmental officer, suggests where we might find them in churchyards and buildings, in her regular God's Acre article (p.35). The diocesan safeguarding officer has provided us with some information about the progress being made by the Church of England, and the Lichfield diocese in particular, on safeguarding (p.26), an important topic for everyone, while this month's book review, of Colleen Hooper's *It Ends With Us* (p.16), chimes in with these issues.

Unfortunately, no one has written to our Letters to the Editor this month, so that feature is in abeyance. I've received promises, however, for a series of Gardens Renovated articles from Barry and Sue Evans of Trefonen later in the year, and having been shown round their garden at various stages, I'm looking forward to that! We are also hoping to begin a new feature, maybe as early as next month, called 'The Editor's Interview' – so watch this space!

As usual, thanks to our regular advertisers, who support the magazine financially. If you do use their services, please let them know that you found their details in our magazine.

Janey Fisher

Note: We warmly welcome all your contributions, but please be aware that on occasion these may need to be edited for length or to ensure relevance to our readership. I will always consult with the author if any substantive changes are needed, but in these cases please note that the editor's decision is final. – Ed.

Flaming June??



Having been lucky enough to get a few days' break in our camper in May, we actually saw sunshine one day out of four, and made the most of it!



We set off from Llanrugg for a gentle stroll in the direction of Llyn Padarn towards Llanberis - a truly gorgeous walk which took us up the side of a mountain, through two country parks, past Llanberis Railway, chuffing its way along the lake-side, over streams, with lunch in Llanberis and a much slower walk home via a tunnel! Revival was needed!! A good old cuppa and a piece of cake did the trick while our feet quietly steamed and returned to their normal size again! BUT - who knew we could still do nine miles?!

On the subject of walking - by the time you are reading this, our Trefonen Hill Walk Weekend will have come and gone! All the hard work and worries (will people come to our events or won't they?!) will have been worth it because of course they do!! We'll have walked, biked, played traditional games, taken part in a Wheelie Parade, Quizzed, enjoyed an Evening of Local Talent, Filled our Copper Jar to the brim, and generally had a great time while raising money for our charities! By this time we are glazed over and ready for a holiday! (Mine's booked!!)

In the meantime, a few days spent with my recuperating daughter in Wales at the beginning of May included a walk through Cors Y Llyn Nature reserve. We spotted this little fellow basking in - yes - The Sun!



Fingers crossed for a few more days, (and hopefully weeks) of more clement weather before the summer runs out of steam!

Just off to refill the bird feeders!

A quick word of thanks to The Arty Group who have worked hard to make sure we had displays in the Hall and The Green as part of the Hillwalk festivities.



Enjoy the summer everyone.

Ann Hindley

Offa Community Support:

Thanks to everyone who supported the recent fund raising quiz organised by Offa Community Support.

We are a small group of local residents and when we can, we help villagers who might be experiencing a difficult time for whatever reason. We also get involved with projects such as replenishing bedding plants in the Trefonen planters at each end of the village.



Similarly we have recently supplied Treflach with new planters and plants at the village green and Nantmawr side of the village.

Please email us if you know of anyone you think we can help locally.

John Davies

Fly Tipping in Little London Lane:

It has come to our attention that there was a large load of rubbish fly-tipped at the far end of Little London Lane, Trefonen, on the night of Monday 13th May. This was reported to our councillor Joyce Barrow, and by the time you read this we hope it will all have been cleared up.

Footage from the shop's CCTV cameras was being inspected to see if that showed up any suspicious lorries going up Bellan Lane. Trefonen's Community Noticeboard had plenty of activity on the subject on Tuesday 14th! Please keep your eyes open, everyone, for more of this type of illegal dumping of rubbish – once it starts, it can become a real problem for a community. Ed.





Trefonen Garden Club Monthly Meeting

7:30 p.m. Thursday 20th June at Trefonen Village Hall SY10 9DY

Cholmondley Gardens – Gardens of Distinction by Barry Grain

Trefonen Garden Club welcomes Barry Grain, Head Gardener since 2013. He will be looking at the challenges and rewards of developing the next many years of 70 acres of historic and extensive Gardens less than 30 miles away.

Bring along your friends and neighbours, everyone welcome at the Trefonen Garden Club!

Contact: 01691 583 012;
trefonengardenclub@gmail.com;
www.trefonengardenclub.org.uk



LLOYD'S ANIMAL FEEDS

Agricultural Feed Specialists

Lloyds Animal Feeds is the leading independent animal food producer in the country.

The Company philosophy is to provide customers with the exact specification feed they need to maximise their profitability in the market place.

Head office:

**Morton, Oswestry, Shropshire, SY10 8BH, United Kingdom
01691 830741**

Thinking of selling your home? Problem solved!

Receive our Marketing Package when selling your property with us:

- Professional photography
- Floor-plan
- Hybrid videoette

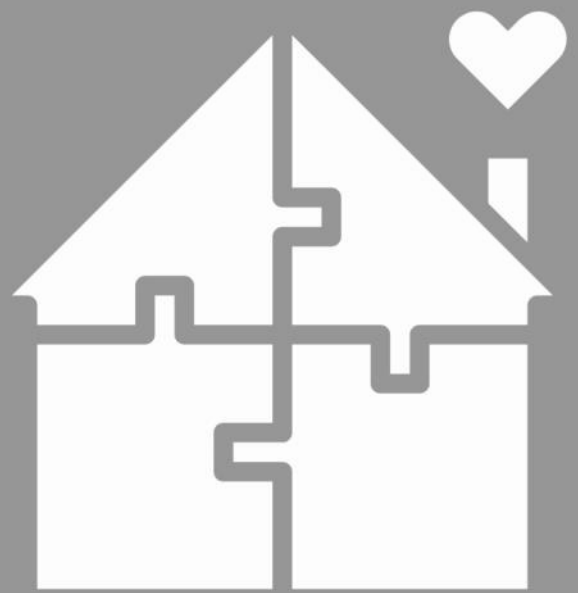
CALL: 01691 680044

www.woodheadsalesandlettings.com

Providing a professional, honest, and trusted service to our customers, since 2004



WOODHEAD
OSWESTRY SALES & LETTINGS



The Day Centre Club Oswestry



Day care for older people, providing a relaxed, friendly and welcoming environment for people

Please contact Sue Jones for more information.

Call 01691 650513 or 07854 511750, or visit www.daycentreswestry.co.uk

**JOHN
OSMAN**
Groundcare

John Osman Groundcare Ltd
The Yard @ Lindisfarne,
Maesbrook,
Oswestry,
Shropshire,
SY10 8QB

Sat Nav use 8QT

T: 01691 671100



WEB

SOCIALS



www.johnosman.co.uk

Trefonen WI:

'Fresh air, good food and happiness.'

Our May meeting was a highly enjoyable evening of theatre shared with a hall full of visitors who were treated to a one-woman show by local actor Alison Utting.



Alison was in role as Dame Agnes Hunt, one of our most important local celebrities and co-founder of the orthopaedic hospital and of Derwen College, both still shining centres of excellence. Taking her script from Dame Agnes' own words in her autobiography *This is My Life*, Alison focused her performance on the early years of Dame Agnes' life.

One of eleven siblings born to a mother who strongly disliked children, Agnes' life was irrevocably changed aged 10 when she developed sepsis from a neglected blister on her heel – 'We were never allowed to complain.' This left her with permanent pain and immobility which affected her entire life. She was allowed no special treatment for her disabilities and was forced to do the best she could. A clergyman visiting her sickbed gave her these words, which inspired her into nursing and are on her gravestone in Baschurch: 'Reared in suffering thou shalt know how to solace others' woe. The reward of pain doth lie in the gift of sympathy'.

Nothing about Agnes' life was simple but rather unexpected and remarkable. Unusually for upper-middle-class young women she and her sisters were expected by their mother to find a profession or be apprenticed as cooks. They should certainly not 'Wait around with their mouths open to be married!'

Following the death of her father aged twelve, her mother took the whole family to Australia to buy an island and rear angora goats. Alison's performance of all the adventures made the audience laugh uproariously but also fall silent appreciating the pathos and importance of some of the experiences.

By 1887, Agnes was back in England ready to begin her nurse training. She applied to the great London teaching hospitals and was given a place in the Royal Alexandra Hospital ... Rhyl! It was here that she learned what became a guiding principle of her whole nursing career: patients and staff need fresh air, good food and happiness.

Back in London in a variety of settings and as a district nurse Agnes found very different conditions as she battled cholera, typhoid, smallpox, measles and – above all – poverty. At this time she met and worked with Emily Selina Goodford or 'Goody' and their friendship, inspiring vision and hard work continued until Goody's death in 1920. Agnes wrote: 'It is given to few people to live and work with one beloved friend for thirty years in perfect love and unity.'

In 1900 Agnes, with mother in tow, started a convalescent hospital in Baschurch based on encouragement, recovery and hope. Who could have predicted that this would grow into the world-class orthopaedic hospital and Derwen College that we love today?

Alison's performance finished at this point, to very warm and heartfelt applause. Who knows? Perhaps she'll bring us the next stage of Dame Agnes Hunt's journey one day?



In WI we're making plans for the Trefonen Hill Walk Village Show and looking forward to a demonstration of Indian Cookery at our next meeting on Thursday June 6th. For further details please contact Victoria on 07773 364992; v.gemmell@hotmail.co.uk



Val Smout winning the monthly raffle.



HOUSMAN TREE SERVICES

Fully qualified and insured,
covering all aspects of tree care

07377 328580 / 01691 753958

housmantreeservices@outlook.com

Harry Roberts



TREE CARE & LANDSCAPING

All types of trees carefully felled, pruned & topped
Apple, Pear, Plum etc

Conifer, Beech, Hawthorn hedges reduced in height

All foliage from trees cleared away

Hedges, Trees & Shrubs - trimmed and shaped

Stump grinding & Woodchipping

Fully Insured

Free quotes and advice, ask for

Harry - 01691 770054

07534 470670

harryroberts1245@hotmail.com



BRIDGE PLUMBING

OFTEC REGISTERED

All domestic plumbing and central heating work undertaken including:
Oil boiler servicing, installation and commissioning

Please call Michael on:
Home: 01691 657826
Mob: 07790 301520

9, Martins Fields,
Trefonen,
SY10 9EP

Email: bridgeplumbing0001@gmail.com

S. Owen & Sons

YOUR LOCAL HEATING OIL,
COAL MERCHANTS &
Propane & Butane
BOTTLED GAS SUPPLIERS

“Prompt &
Personal Service
at Competitive Prices!!”

www.sowenandsons.co.uk

Telephone:
Llanymynech 01691 830315 or
01691 830163



**P & S Electrical
Contractors Ltd**

**DOMESTIC ~ COMMERCIAL
FREE ESTIMATES**

***ELECTRIC CAR CHARGING
POINTS FITTED***

**Rewires, New Builds
Landlord Safety Checks (EICR)
General Electrical Work
Fuse Board Upgrades**

ALL Work Tested & Certificated

**CONTACT STUART
07710 664 254 / 01691 238039
pandselectrical27@gmail.com**



ValentineWindow CLEANING

www.valentinewindowcleaning.co.uk

0 7 5 4 0 6 4 8 5 6 5



**WINDOWS | SOFFITS & FACIAS | CLADDING | CONSERVATORIES
GUTTER CLEANING | JET WASHING | SOLAR PANELS**

DATE FOR YOUR DIARY.....

LLANYBLODWEL COMMEMORATES !



7pm Start

BEACON LIGHTING 9.15pm

Llanyblodwel Village Hall

Food, Bar and Fun for all the family!



First Friday

in St Michael's Church, Llanyblodwel

an evening with

George, George and his Ukulele



Llanyblodwel resident, JOHN CROFT, talks about the Ukulele, some Famous Players, Plays a few Songs, and tells the story about George Harrison's stay in...
Llanyblodwel

Friday 7th June 2024, 8.00pm

St Michael's Church, Llanyblodwel. SY10 8NQ

Free entry. Refreshments available

The first in a series of evenings of knowledge, conversation
and mingling held on the First Friday of the Month

Barley Mow Inn



Trefonen, Oswestry

Wide selection of Real Ales, Lagers, Ciders, etc.

Open fire, Pool table,

Darts, Dog friendly.

Function room (seats 50) for free hire.

We will be serving food again from mid-June

Opening hours:	Monday	Closed
	Tuesday	5.00 - 10.00pm
	Wednesday	5.00 - 10.00pm
	Thursday	5.00 - 11.00pm
	Friday	3.00 - 11.00pm
	Saturday	12.00 - 12.00pm
	Sunday	12.00 - 8.00pm

Barley Mow Inn

Chapel Lane, Trefonen, Oswestry, Shropshire, SY10 9DX

01691 656889

email: barleymowinn@mail.com

Fb: Barley Mow

LAWRENCE'S

COPYING
PRINTING
INVITATIONS
WEDDINGS
ORDER OF SERVICE
FUNERAL
ORDER OF SERVICE
BUSINESS CARDS
FLYERS
BANNERS

NEED SOMETHING PRINTING? EMAIL IT
OVER AND IT WILL BE READY FOR YOU
TO COLLECT

Find us on



Contact us on 01691 238039
Email lawrencedirect20@gmail.com

OUR WORKING HOURS ARE:

MONDAY 9AM - 3PM
WEDNESDAY 9AM - 3PM
FRIDAY 9AM - 1PM

WE HAVE LEFT CHURCH
STREET
HOWEVER WE ARE STILL
IN OSWESTRY
Free Parking -
Easy Pick Up

www.supportmycomputer.co.uk



PC/Laptop Stopped running or running slow
or need a replacement?

Call Justin, on (01691) 830822 or
(07772) 596029, for low fixed prices from
£19.95

Spyware removal/installation of leading edge
spyware prevention

Virus removal/installation & Complete Sys-
tem Rebuilds

Performance Tuning & Business PC Support

Hardware/Software Installations and Training

Upgrades and Automated Backup

Remote Support/Annual PC health Check
also available

Wireless Networking and New PC/Netbook/
Laptop sales see website

Your advertisement here?

We are hugely grateful to
all our advertisers - the
income from whom allows
us to distribute the printed
magazine free of charge.

If you, or anyone you
know, would be interested
in promoting their business
through these pages, then
please get in touch with
the editor (contact details
on page 2).

Chimney Sweep

[Formerly John Thompson retired]

Specialising in the cleaning of:

All domestic fires, AGAs,
Rayburns & Stanleys

Blockages Removed

Bird Guards supplied

Advice & Problem Solving

Fully Insured

Certificates Issued

Ross Hines

24 The Wheatlands

Baschurch

SY4 2DN

T: 01939 768319

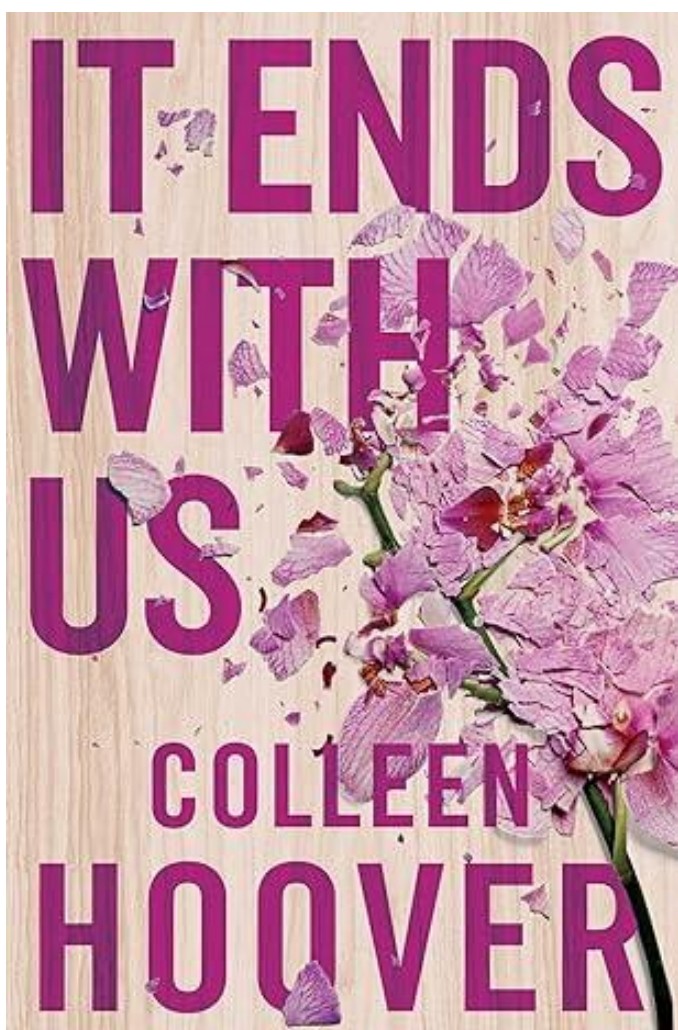
M: 07837 745571



Book Review – *It Ends With Us* by Colleen Hoover:

It Ends With Us isn't an easy read, given that the subject matter is emotional and physical abuse, and the damage it does to those who are victims of it. But at the same time it is uplifting, because the heroine in the end manages to find a way out of the cycle of abuse and break free – which is the meaning of the title.

The book is set in the United States (and written by an American), but the core themes are universal and can resonate with anyone. Lily is an only child brought up in an abusive household, though the abuse perpetrated by her father on her mother never touches her directly in a physical sense. But the emotional damage caused by watching her mother's suffering and inability to free herself from the situation leaves Lily vulnerable to the cycle of abuse. As a teenager, she meets Atlas, a homeless boy who attends her school, and the two begin to support each other, and eventually fall in love. But Atlas has an offer of a home with his uncle in Boston, and to Lily's distress he leaves her.



When Lily herself moves to Boston, later, she opens a successful florist shop and meets an attractive neurosurgeon, with whom she begins a relationship. Her life seems to be going well and the past can be left behind – though she would love to see Atlas again. But the past is never truly behind us, and Lily finds herself in an abusive situation once again. I won't spoil the story for you and tell you how she finds a solution to her problems, but it is a well-worked plot and emotionally satisfying.

The author's afterword explains that the story is based partly on her own experiences, and this is, I think, partly what gives the novel its power. It does not shy away from difficult issues, or from the pain that victims of abuse experience, but it is nevertheless full of hope. And there is now a sequel!

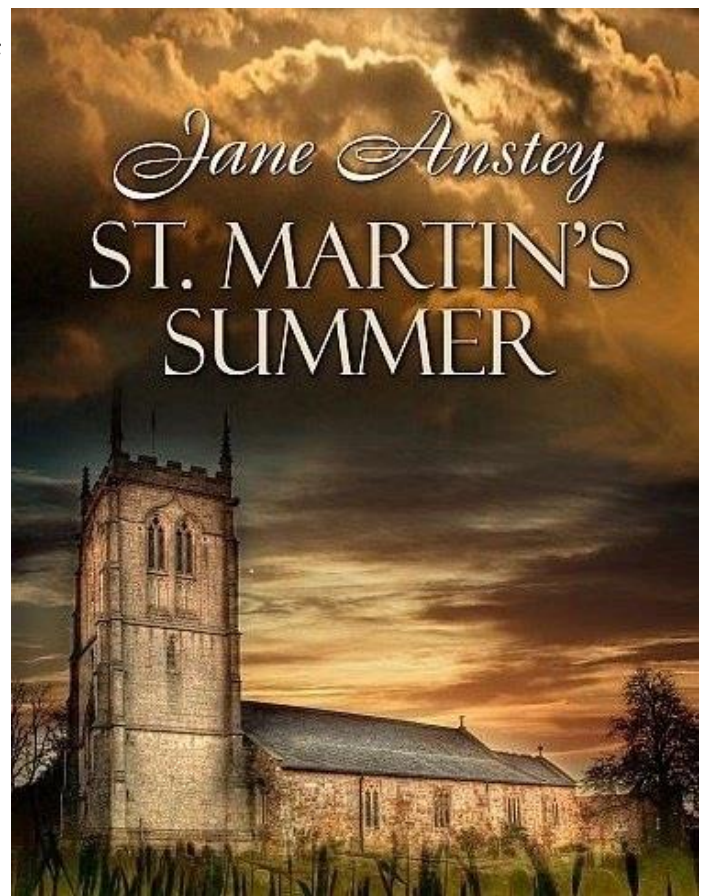
Jane Anstey

Advertisement:

A mystery romance set in a country village among church bell-ringers

In the first of the Jeremy Swanson mysteries, Revd Swanson is Rector of a Hampshire benefice, and embroiled in the moral and emotional tangles of his parishioners. The idyllic relationship enjoyed by 8-year-old Robert and his mother Rose is under threat when his father Clive decides to send him away to school. In business and at home Clive has had his own way for far too long; it is time for the worm to turn, and who better to comfort Rose than her bell-ringer colleague Simon, whom she has always found attractive?

Meanwhile, the peaceful village of St Martin on the Hill is about to suffer its own crisis. Young Robert goes missing, and an unpopular farmer is found dead in mysterious circumstances. Jeremy finds himself involved in a police investigation. But which of his parishioners can he possibly suspect of involvement in either kidnapping or murder?



Reviews:

"Joanna Trollope meets Miss Marple in this not-so-simple tale of country folk which cleverly interweaves romance and mystery. Don't be deceived by the gentle start; this story quickly gathers pace and both themes end with conclusions which are as unexpected as they are consistent with the developing characters of the lead protagonists."

"Anstey certainly knows how to explore the inner life, its blockages, its suppression and how it can blossom in difficult circumstances that blow away the façades."

"The reader is treated to page-turning narratives that weave between the protagonists and the dilemmas they face. Nobody, it transpires, is quite what they seemed at the outset and yet there remains a consistency about them which runs true to type in the end."

RIDE ON MOWERS & WALK BEHINDS

CORDLESS/BATTERY & PETROL
OPTIONS AVAILABLE.

Morgans Machinery



01691 670500



MILE END BUSINESS PARK
OSWESTRY, SY10 8NN



LP@MORGANSLTD.COM



WWW.MORGANSMACHINERY.CO.UK

WE ALSO
SERVICE
& REPAIR

MORE DETAILS CAN
BE FOUND ONLINE



Beth Bakes...

Bespoke, handmade
cakes of distinction.

Bethbakes.co.uk

Find me on Facebook:

@cakesbybethbakes

01691 791571 07811 321038

Email: beth@bethbakes.co.uk

Maths Tuition

up to

GCSE

KS3/4

Blodwel Bank, Treflach

Individual Tuition

Qualified, Experienced Teacher and Tutor

DBS Approved

English and Welsh Specifications

For further information contact Ruth Clark
07598 713047 / ruthannclark@outlook.com

TREFONEN INDOOR BOWLING CLUB

We are looking for new members to join our friendly club.

Would you be interested?

We meet at Trefonen Village Hall on Wednesday evenings at 7.15 until 9.15,
starting on 6th September 2023

For further details contact Kath Barclay on 01691 828587 or just come along.

First evening free.




COMPACT HAIRDRESSERS

OZLOO'S
**SPECIALISTS IN PORTABLE
TOILET HIRE**
01691 772904
WWW.OZLOOS.CO.UK
ozloos@btinternet.com

The Community Cafe

Trefonen Village Hall

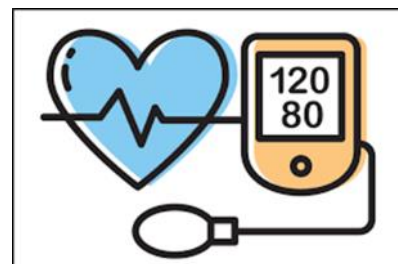
Tuesday mornings, 9.45am - 11.30am

A place to meet with friends and enjoy a cup of tea or freshly brewed coffee and homemade cakes. If you have never been before or are new to the area we would love to see you.

~~~~~

In conjunction with Qube the next pop-up blood pressure testing will be on 25th June from 10.00am.

Ideal opportunity to have your blood pressure checked.



~~~~~

Could you spare a couple of hours on a Tuesday morning to help at the cafe every 4 to 6 weeks? We would really appreciate it if you could.

Please contact Chris Kirk on 688595 or email kirk.garden@btopenworld.com

Café Rota:

Date	Open	9.45	10.15 - 11.30	Close	Cakes
4th June	Malcolm	Chris	Malcolm, Chris, Jill	Malcolm	Chris
11th June	Peter	Rosmarie	Rosmarie, Val, Dawn	Val	Rosmarie, Michelle
18th June	John	Diane, Kath	John, Diane, Kath	John	Kath, Diane
25th June	Malcolm	Chris, Linda	Malcolm, Chris, Linda	Malcolm	Chris, Linda

Foot Health Clinic: None in June; Lorraine will be here again on July 2nd. Contact her on 07714 244359 to make an appointment.

Reminder:

Monthly pop-up market at Llanyblodwel & Porth y Waen Village Hall, SY10 8LZ, 21st June, 9.30am - 1.30 pm.

Local products including cakes, preserves, plants, flowers, jewellery, gifts, clothing, soap, beauty products etc. etc.

Contact Deb Powell on 07932949191 or debzpopup@gmail.com for more details.



Quiz:

Another cryptic quiz from Norma this month. All of the answers are some kind of food or drink.

1. London fog
2. A soup that makes fun of a reptile
3. A pet
4. Rough or calm Miss? (*anag.*)
5. If I just cure (*anag.*)
6. An animal and a short story
7. Pick a torn claw
8. A married lady's symbol
9. To grumble or complain
10. Mary took her one to school!
11. An English essayist
12. A knitting stitch
13. Cash on delivery
14. Amphibious military transport
15. Kate and Sydney are Cockney
16. Crowning glory
17. Boring: he goes on and on
18. Does Grandma really suck them?
19. His gag was Scottish
20. My son John, diddle, diddle
21. Is he a cream cone? (*anag.*)
22. Piscine delights
23. This is highly flavoured condiment, Edwina
24. Petunia lives on their patch
25. Vehicle decay
26. Fragments of stone
27. Jack planted more than he could handle
28. Hail one before time
29. Just a small portion
30. A vulgar woman
31. Banned by an Act of Parliament
32. I make a lot of noise
33. Is it water or ice, or both?
34. The pick of the group
35. A busy day for the vicar
36. Frothy and insubstantial
37. Taking one's time coming to the point
38. Do I have to sit in the corner to eat this?
39. Frogs' spawn
40. French cake from Germany
41. Forbidden fruit
42. Two of a kind
43. Is nice Duchess beat? (*anag.*)
44. Continuous high-pitched sound
45. A joint of eleven
46. Adam's ale
47. Red and yellow
48. Sought after by sailors in a storm
49. A trap and pick me up
50. Pretend anguish

Answers on page 44



Bed & Breakfast Camping

Siobhan & Neil

01691 900537 or
07531 808944



At the bottom of
Candy Woods

oldmillcandy@gmail.com
www.oldmillcandy.co.uk

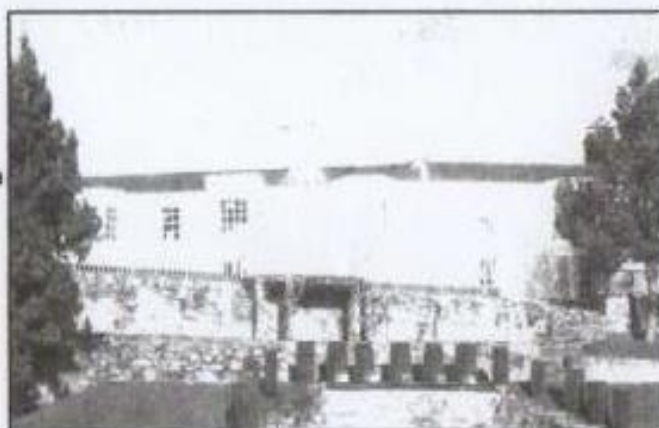
Bryn Tanat Hall

an exclusive venue for an exclusive wedding

A family owned and managed 17th Century country Hall with 10 bedrooms set in 3 acres of terraced riverside woodland gardens.

The Terrace Room for 20 to 70 extends with a marquee for up to 250 people. Five star accommodation, peace and privacy will ensure close family and guests really enjoy the experience.

To arrange a private viewing please contact Susan Martin.



01691 828 266
www.bryntanat.co.uk

News from St Michael's Llanyblodwel

On Friday 7th June we are having a social evening at the Church called 'George, George and his Ukulele'. John Croft will talk about the history of the ukulele. He will also share the story of when George Harrison stayed in the village. It starts at 8pm, free entry, and there will be refreshments available (see poster on p13).

This is the first of a programme of talks to be held on the first Friday in the month. The next one is on 5th July, when the topic will be 'Culture', led by Becky Hunt. More on that in the July magazine.

Cafe Blodwel will be held on Wednesday 5th June from 10.30am to 12.30pm. Maybe we'll be able to have a coffee in the sun, weather permitting.

More fundraising events are in the pipeline for the church – watch this space!

Church services for June are on p46, and a list will be up on the notice board in the Lych gate.



Eirlys Williams

Bouquet of thanks from Revd Kathy...

By the time many of you read this, I will be half way across the world, starting a new adventure in a new parish, but it would be remiss of me to go without expressing my heartfelt gratitude for all your cards, good wishes, and extremely generous gift from the Benefice and from others who gave individually to me as well.

Some of you may know that for years I have yearned for one of those reclining type chairs with a footstool, envisaging it as the place of inspiration of sermons, liturgies and madcap ideas etc., but never could justify the expense in my head. Thanks to your generosity I can now buy it as a gift from you and every time I sit in it, I will know I am surrounded by your love and prayer and supported by it, as I have always been, through the good times, my various celebrations of age and ministry, and the bad times, especially losing George and my mum very early on in my ministry here, and will be wherever I go and whatever I do, as you will be by mine. I will send a picture of the chair when it is purchased so you can see for yourselves – me enjoying your generous gift.



As well as the Benefice gift, I thank the churches for their individual send-offs – the kind words, not to mention flowers, chocolate and cake, on Easter Day, made the day special and memorable, and the 'leaving do' was just right, and will stay in my heart and mind for a long time – thank you. And I mustn't forget Sofa Club, Linda and Betty, the schools, David Davies and a good number of individuals who have given me very personal, often pertinent but overwhelmingly generous gifts. For each and for all I am touched, warmed and consider myself loved and fortunate indeed.



Thank you all and every blessing.

Kathy

Thought for the month:

What a busy month May has been in many ways. In Trefonen we have had the Hill Walk which draws people from all over. It is a fun-filled weekend that many people from far and wide enjoy while raising money for good causes.

Then, as a Benefice, we have had our first full month without a Rector. We are in what is called an 'interregnum'. (Inter = between, regnum = reign, so interregnum means interval, or pause.) It is also sometimes called a Vacancy.

Now we are in June and during this interval or pause, church life has to go on. The normal day to day work has to be done. Helen Parish is doing a grand job in the office as Benefice Administrator; the churchwardens are working hard behind the scenes to 'keep the show on the road'; and the Lay Chairs (who chair PCC meetings), Linda Gladman (Lay Reader) and the worship leaders, are sorting the services, among other things. Overarching all of this is prayer, that God will guide us to the way He wants us to go. It will take some time until decisions have been made, so we need to be patient and steadfast.



In Psalm 37 it says "Be still before the Lord and wait patiently for Him." God will send us the right Rector in His own time. Until then let us all work together for the good of us all, as we have been doing in the past, and we will reap the benefits in times to come.

*Betty Steele
Retired Lay Reader in the
Border Benefice*



Prayer Chain

If you would like prayer for an immediate need, e.g. an emergency situation, you can ring any one of the people below. Your message will be passed to each person in the chain (who is available at the time) and we will pray for your need in complete confidence.

Betty Steele	652170	Carol Pickering	238561
Chris Kirk	688595	Jill & Joan	656456
Linda Gladman	671363	Rita Mathias	657934

SOFA Club:

The meeting in June is going to be something completely different: we are having a cupcake tea. There is also a change of venue, to Pant Memorial Institute, between 3pm and 4pm, just for this month. All of us regardless of age either knows someone or has known someone living with dementia. Perhaps you have cared for a relative or you are caring for someone right now. Why not come along and take a break, have a cake, cuppa and a chat, and find out what the SOFA Club does.



We have been running for seven years, and met lots of people along the way, had fun, shared experiences, held celebrations and commiserations. Our members come from all parts of the Benefice, so make a little time to find out more about what we do. Perhaps you may know someone who would benefit from the couple of hours once or twice a month. There is no charge for the tea but any donations will be given to the Alzheimer's Society.

If you would like to know more, please contact Lizzie (Churchwarden, Morton) on 07713083002. Alternatively, just come along.

June Meeting: Thursday 20th June, 3-4pm, Pant Memorial institute.



Lizzie Lawrence



Border Benefice Service



Praise and Pudding

St Agatha's Llanymynech

Sunday 30th June at 3pm

Come and join us to sing some of Our Favourite Hymns
followed by Puddings served in the Church Hall.



All Very Welcome



Working together to create safer spaces:

As a former social worker, I've seen far too many times the damage that abuse and exploitation does to those who suffer it. Often the effects endure for entire lifetimes and seriously affect a survivor's potential to foster good relationships, careers and wellbeing.

So it is heartening that the Church of England has taken massive strides forward in improving its safeguarding training and procedures in the last decade, albeit still not perfect. It's been a huge investment; not just in employing professional staff in the diocese to investigate issues and provide training, but also a significant sacrifice by clergy and volunteers in every parish.

As the diocesan senior lead of safeguarding, I'm truly thankful to all who give up time and energy to participate in that training on topics that are not entirely pleasant and sometimes emotionally difficult. But it is worth it. Together we are making our churches safer places for children and vulnerable adults. People in parishes across the country make sacrifices to do the training and then do the work of safeguarding. It truly is an act of love, fulfilling Jesus' command to 'Love your neighbour'.

Let me reassure you that it pays off. I was recently sent a safeguarding review from Lichfield Cathedral and within it were highlighted three instances where the care and training of volunteers and staff who are not safeguarding specialists showed its worth. Bishop Jan (who is Acting Dean of the cathedral) writes:

"Often the most difficult thing to measure is culture. How can we be sure that the attention we give to this important area of our work is making a difference? Three anecdotes stand out to me:

"The first was at the Chorister Christmas Party where one chorister had a forfeit during one of the party games. They were asked which three people they would expect to find in the cathedral and they announced, 'The Cathedral Safeguarding Officer'. An excellent answer!

"The second relates to a young girl (11) who appeared at the Christmas Light Show. Each evening over 3500 people came to the cathedral, and within all

of that busyness, several volunteers identified the young girl behaving oddly and they called the nominated safeguarding officer for that evening. This situation was unusual and it became clear that we needed to respond in ways other than we might usually do, and I am pleased to report that the team adapted incredibly well and ensured the girl was safe until the Police arrived.



“Thirdly, during Evensong the Assistant Director of Music looked down from the organ loft and spotted someone they thought had been suspended from their church role. This was reported and investigated, and it would seem the individual should not be in church without an Agreement. A plan was swiftly put in place in consultation with the Diocesan Safeguarding Advisor (locally and also from the appropriate diocese) and the cathedral’s front-line team, so that if the individual re-appears we are able to offer suitable challenge.”

Together, they achieved far more than a single vicar or Parish Safeguarding Officer achieves on their own.

Neil Spiring, Diocesan Senior Lead for Safeguarding

For all questions about safeguarding and safeguarding training, please visit the diocesan web pages: www.lichfield.anglican.org/safeguarding.

The safeguarding officers for St Michael’s Llanyblodwel and All Saints Trefonen are given on p.2 of our magazine – Ed.

What is Safeguarding?

The term safeguarding is used in the UK to describe any action taken to promote the welfare and ensure the safety of adults and children who may be at risk of abuse, neglect or exploitation.

Why is Safeguarding Important?

Safeguarding protects people who are unable to look after themselves due to age, sickness, infirmity or disability. This can include elderly people, people with severe illnesses, children, physically disabled people and people with mental disabilities.

Despite all of the attention paid to the issue, national statistics reveal that the prevalence of abuse remains worryingly high.

The Six Principles of Safeguarding:

Empowerment: Children and vulnerable adults should feel they can provide consent and make decisions regarding the nature of their care.

Prevention: It is always better to prevent harm from occurring rather than reporting incidents after the fact.

Proportionality: Any safeguarding response should be appropriate and proportional to the risk the person faces.

Protection: Vulnerable adults and children at risk should be provided protection from harm as well as support and representation.

Partnership: Communities, schools, organisations, local authorities and businesses should all work in conjunction to prevent, detect and report neglect and abuse.

Accountability: There must be full accountability and transparency related to any safeguarding procedures.

If you believe a child or vulnerable adult is in immediate danger or at risk of serious harm, call 999. If it’s not an emergency, then call Shropshire Council’s Social Care team on 0345 678 9021. If you’re reporting something out of office hours, the number is 0345 678 9040.



MORGANS OFFER A DESIGN SERVICE TO HELP MAKE THE MOST OF YOUR SPACE WITH BEAUTIFUL STORAGE SOLUTIONS



MILE END BUSINESS PARK, OSWESTRY, SY10 8NN



01691 680594



OEPP1@MORGANSLTD.COM



COME AND SPEAK WITH OUR FRIENDLY & EXPERIENCED TEAM IN STORE TODAY TO START YOUR DESIGN

Massage Therapist



Integrated Holistic Therapies

Rosmarie Starck is a highly experienced massage therapist offering a wide range of treatments tailored to your needs whether it's general relaxation, clinical massages for specific muscle issues or chronic pain conditions.

- * Holistic Medical Massage
- * Reflexology
- * Aromatherapy
- * Reiki
- * Hopi Ear Candles
- * Hot Stone Massage
- * Trauma Discharge Therapy
- * Indian Head Massage
- * No Hands[®] Massage

Special Introductory Offer

Please contact us on 01691 659809 / 07554 017632 or email rosmariestarck56@gmail.com

Classical Yoga Trefonen and Pant



New Term Starting
4th September 2023

Monday Morning 10.30-12, Pant Memorial Hall
Thursday Morning 10.30-12, Trefonen Village Hall

Contact: ruthannclark@outlook.com / 07598 713047

Everyone welcome
Please bring your own mat
£5 per session

Tanat Foot Care

Registered Foot Health Practitioner



Treatments in a modern clinic
situated on the Shropshire/Welsh border.

- Toenail Trimming
- Caluss
- Cracked Heels
- Corns/Verrucas
- Diabetic Foot Care
- Ingrowing Toenails
- Fungal Nail
- Athlete's Foot

For an appointment, please contact Lisa on

07891087394

Email: tanatfootcare@hotmail.com



Bryn Offa Church of England Primary School



Rockwell Lane, Pant, Oswestry, Shropshire, SY10 9QR

admin@brynoffa.shropshire.sch.uk

Tel: 01691 830621

Dear Parents and Carers,

I am writing to introduce myself to you as the new Headteacher of Bryn Offa CE Primary School. My name is Mrs Keleher, and I am thrilled to join this wonderful school community. Before I officially begin my post in September, I wanted to take this opportunity to share a little bit about myself and my vision for the school.

First and foremost, I am a mother of two, and my dedication to ensuring the best outcomes for children stems from both personal and professional experiences. With over 20 years of involvement in the field of education, spanning across Shropshire, Cheshire, Manchester, Devon, and even Australia, I bring a wealth of knowledge and passion to my role.

While my background began in early years education, I have had the privilege of teaching pupils across all primary age groups, broadening my experiences and perspective. I firmly believe in the holistic development of our children and see them as whole individuals. Though academic achievement is undoubtedly important, I am equally passionate about nurturing their social, emotional, and moral skills, ensuring they leave school equipped with the tools they need to thrive in the world beyond our gates.

I am excited to join the Bryn Offa community, a school that is already renowned for its commitment to excellence. I am committed to maintaining and building upon the school's reputation for providing a high-quality education for all children. Together with the dedicated staff, supportive parents, and enthusiastic students, I am confident that we can continue to achieve great things.

Before I make the move back home to Shropshire and I officially start in September, I hope to have the opportunity to meet with as many families as possible. I am eager to hear your thoughts and aspirations for your children and the school as a whole. Please keep an eye out for further communication regarding meet-and-greet opportunities in the coming months.

I am genuinely excited to embark on this journey with you and your children. Together, we can make a positive difference and ensure every child lets their light shine brightly.

Warm regards,

Mrs Keleher.



Trefonen School News:

Now the rain has relented and the temperature is rising we can look forward to some better weather. It was a busy month last month with Wrens Class on a trip to Blists Hill Victorian Museum, Hawks Class to Shrewsbury, Year 6s doing their SATs and KS1 enjoying athletics and Year 5 & 6 being active in cricket competitions.



We currently have multi sports coaches and a cricket coach providing after school clubs for all year groups.

This month we have outdoor pursuits for Years 4, 5 and 6, Fathers Day wrap, Queensway athletics and rounders competitions as well as Year 6 transition days to their new schools and new children visiting our reception class ready for the new academic year.

Our Value of the Month is: **FREEDOM**

We will be thinking about:

Tolerance	Consideration	Responsibility	Human Rights
Free Speech	Justice	Independence	Empathy

Thoughts for the month:

'Freedom is not worth having if it does not include freedom to make mistakes' – Mahatma Gandhi

'For to be free is not merely to cast off one's chains, but to live in a way that respects and enhances the freedom of others' – Nelson Mandela

Around the classes:

Robins have been tending the sweet peas and vegetables they planted in their garden and learning about how tribes in Africa keep their crops safe from animals.

Nightingales have been writing their own stories based on Stanley's Stick, Year 1s have been multiplying by 2, 5 and 10, and Year 2s have been looking at height and length.

Wrens have been writing poetry based on a chosen memory or event and they have been looking after their sunflowers that they planted from seed.

Puffins have been working hard on achieving 2.6 miles each day following on from the London Marathon and have been looking at Local Heros in WW1.

Hawks have been learning how living things adapt to their environments in Science, and in History the different uses for lime and it being in high demand during the 20th century.

Dates:

Monday 27th to Friday 31st May
Monday 3rd June

Summer Half Term
Start of second half of term

Friends of Trefonen School (FoTS):

If you would like to get involved, please contact the school on 01691 652960 or email friendsoftrefonenschool@gmail.com

School email: parentcontact@trefonen.shropshire.sch.uk;
School website: www.trefonenschool.co.uk

Ms Dunleavy, Headteacher



Local solicitors for every occasion



Get in touch today:

 01743 248545

 mail@hatchers.co.uk



Residential Property | Wills & Probate | Family Law
Dispute Resolution | Personal Injury | Employment Law
Business Law | Commercial Property | Agricultural Law







Trefonen and District Garden Club



*There once was a dormouse who lived in a bed
Of delphiniums (blue) and geraniums (red),
And all day long he'd a wonderful view
Of geraniums (red) and delphiniums (blue).*

A.A. Milne



By now pots, baskets and beds will have been filled with the traditional summer bedding plants, most likely geraniums, begonias and petunias. These always make for a colourful display that lasts many weeks and are tried and tested favourites. They certainly uplift the spirits, as do the wonderful displays in Cae Glas Park and around the town. Closer to home we have the planters either end of Trefonen village and in Treflach, all thanks to volunteers, who look after them. Today there is such a wide variety of summer bedding to choose from, in a glorious array of colours and perhaps more suited to pollinators and butterflies, than the traditional varieties and maybe more relaxed and less formal. Whatever your choice and style it is lovely to see the displays in front gardens embracing summer.

By now we will have had the garden club's annual plant sale, which helps support our evening speaker programme. This month Barry Grain is coming to give a talk on Thursday 20th June on Cholmondeley Gardens.

It is not too late to book your ticket for the RHS Flower Show at Tatton Park on Friday 19th July. The cost of £48 includes the return coach trip and entry to the show. This will be the last time that the show will be held there until 2027. For tickets or more information email Richard at rwstevens1950@gmail.com

Make sure you have time to enjoy the fruits of your labour, from smelling the roses, to eating fresh fruit and vegetables, and hopefully we will have some warm evenings to sit outside, and take it all in.

Our meetings are open to everyone, visitors and members alike.

To find out more visit www.trefonengardenclub.org.uk



Chris Kirk



Solitary Bees:

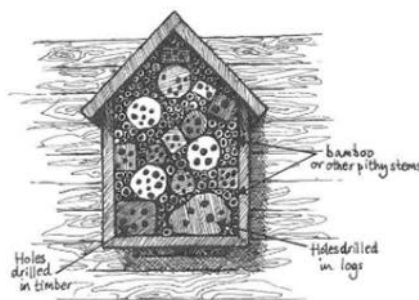
Did you know that there are about 270 species of bee in the UK of which 90% are 'solitary bees'? They get this name as, unlike bumblebees and honeybees, they do not live in complex colonies but nest individually, with the female laying one or a few eggs in a nest with a parcel of pollen and nectar to feed the young when they first hatch. Some of the more common types of solitary bees include Mason, Mining and Leafcutter Bees.



Mason Bees build nests out of mud or clay. Have a look on the sunny walls of your church or chapel and see if there are any little mounds of mud, these could be mason bee nests. Mining Bees nest underground, digging tunnels to create their nests. Areas of short grass and bare ground are preferred by mining bees. Burial grounds often contain small patches of bare earth or cracks in the ground around monuments which can be great for them. Leafcutter Bees build a nest in a hole, crevice or hollow plant stem. They bite off circular pieces of leaf (particularly roses and bramble), which are then glued together using saliva to make a nest. Gaps between stones, old bits of wood and rough corners where dead stems are left will all be used by a variety of solitary bees.

Solitary bees are particularly important pollinators, perhaps because they lack pollen baskets on their legs so pollen both attaches and brushes off quite easily, spreading it around. Have a look for red mason bee, which tends to use bee hotels; how about ashy mining bee which is striped black and white; or the signs that leaf-cutter bees have been taking circles out of plant leaves.

You can help solitary bees by having a wide range of wildflowers and native grasses and a mosaic of short, long and tussocky grassland. How about a scruffy corner with some hogweed or bramble out of sight of the church entrance? This provides excellent nesting or overwintering cavities. People love to make bee hotels but don't forget that how you manage your local churchyard has a big effect too. Why not take photos of any bees you see and upload them onto the iNaturalist app which will both help you identify them and also make a record so others can see what you've found.



You can also visit www.caringforgodsacre.org.uk – individuals and groups in the diocese receive 20% members' discount on all CfGA materials. Use the discount code diomem22.

Harriet Carter, *Diocesan Churchyard Environmental Advisor*,
harriet@cfga.org.uk





Independent Financial Advice

We are a family run firm, offering a friendly unbiased service.
Drop in or call us for a free, no obligation chat about how we
can help

"We have been fortunate to practice in such a pleasant and welcoming place. Many clients have become friends and we have seen families grow and are delighted to help their children...and occasionally their grandchildren!"

John Davies

22 Willow Street, Oswestry, SY11 1AD
Tel: 01691 680845
www.johndaviesinvestments.co.uk

- Pensions - Equity Release
- Investments - Mortgages
- Protection - Financial Planning



Brook House Residential Home

Woodhill, Morda, Oswestry, Shropshire, SY10 9AS



Are you looking for a warm, friendly & helpful home in a beautiful setting?

Whether you need a long stay, respite or day care,
please telephone for a brochure or come and visit us.

Mrs Sian Edwards, Manager sian.edwards@brookehousecare.co.uk T: 01691 654167

David Davies & Sons

FUNERAL DIRECTORS

ESTABLISHED 1840



A caring, compassionate
and discreet service from a
family business since 1840

1 Upper Church Street
Oswestry - SY11 2AA

Oswestry 01691 653116 (24 hrs)
www.daviddaviesandsons.co.uk



W. E. Price

FUNERAL DIRECTORS

We always provide the highest level of care, compassion and professionalism.

Available 24 hours a day

Pre-paid funeral plans available

01691 652995

www.wepricefuneraldirectors.co.uk

OAKWOOD, SALOP ROAD,
OSWESTRY, SHROPSHIRE, SY11 2RN



FUNERAL PLANS FROM

Golden Charter

Smart Planning for Later Life



Poetry Group:

At the Poetry Group meeting on 14th May, our theme was 'Showtime!' Eight poets were represented: Brian Bilson, Sheena Blackhall, Noel Coward, Philip Migson (our member Neil's brother), A.E. Housman, Louis MacNeice, Robert Service and Shell Silverstein. We chose a poem by Robert Service, *My Future*, to share with you.

Our next meeting is on Tuesday 11th June, at Glenthorne, Trefonen, 2.30pm. New members will be very welcome to join us. Our theme will be 'Summertime'. For more details please contact Eiluned Parry (01691 655667) or Carol Pickering (01691 238561).

Martin Fisher

My Future

"Let's make him a sailor," said Father,
"And he will adventure the sea."
"A soldier," said Mother, "is rather
What I would prefer him to be."
"A lawyer," said Father, "would please me,
For then he could draw up my will."
"A doctor," said Mother, "would ease me;
Maybe he could give me a pill."

Said Father: "Let's make him a curate,
A Bishop in gaiters to be."
Said Mother: "I couldn't endure it
To have Willie preaching to me."
Said Father: "'Let him be a poet;
So often he's gathering wool."
Said Mother with temper: "Oh stow it!
You know it, a poet's a fool."

Said Father: "Your son is a duffer,
A stupid and mischievous elf."
Said Mother, who's rather a huffer:
"That's right - he takes after yourself."
Controlling parental emotion
They turned to me, seeking a cue,
And sudden conceived the bright notion
To ask what I wanted to do.

Said I: "my ambition is modest:
A clown in a circus I'd be,
And turn somersaults in the sawdust
With audience laughing at me."
. . . Poor parents! they're dead and decaying,
But I am a clown as you see;
And though in no circus I'm playing,
How people are laughing at me!

Robert William Service

Flicks in the Sticks:

In complete contrast to the heart-wrenching *One*, shown in April, the film this month is *Swede Caroline* (97 mins), which was released in April.

Venue: Trefonen Village Hall

Date: Saturday 15th June 2024

Time: 7.30pm (doors open 7pm)

15



The Arts Alive website says about the film:

In this hilarious British mockumentary, we follow Caroline, a competitive giant vegetable grower, as she readies herself for the big annual National Veg Championship. However, Caroline finds her life turned upside down when her prized marrow plants are stolen. Desperate for answers, she turns to two private detectives she knows, who are then dramatically kidnapped. Are the events linked? No, of course not. But Caroline thinks they are and the hunt for her missing marrows takes her way beyond the allotments, plunging her into a national corruption scandal that goes all the way to the top!

IMDb give it four stars, and Rotten Tomatoes four-and-a-half. I watched a trailer, and I think it looks great fun - Ed.

TRANSFORM YOUR HOME TODAY

VISIT OUR SHOWROOM TODAY.
CALL FOR A NO-OBLIGATION QUOTE.
WE ALSO OFFER A 'SUPPLY ONLY'
SERVICE.



- ✓ WINDOWS
- ✓ COMPOSITE DOORS
- ✓ PATIO DOORS
- ✓ FRENCH DOORS
- ✓ BIFOLDS
- ✓ REPLACEMENT GLASS
- ✓ WARM ROOF SYSTEMS
- ✓ GARAGE DOORS
- ✓ UPVC DOORS
- ✓ GUTTERING
- ✓ CARPORTS
- ✓ ALUMINIUM PRODUCTS



✉ WDCSALES@MORGANSLTD.COM

📍 MILE END BUSINESS PARK
OSWESTRY, SY10 8NN

🌐 WWW.MORGANSDOORSANDWINDOWS.COM

VISIT OUR WEBSITE TODAY TO
VIEW ALL WE HAVE TO OFFER.





TANAT VALLEY **FIREWOOD**

Sustainable Local Winter Fuel

Hardwood or Softwood

Ready to Burn or Part Seasoned

Free Local Delivery

Stacking Available

Discounts on Larger Loads

Please Contact 01691 791 571 or 07985 347741



C H Stone Ltd

Dense, hard, rustic stone from Wales suitable for a variety of uses, such as:

- Walling projects
- Architectural features
- Boulders for gardens and driveways

Colour is a blend of gold and brown

For further information and prices, please email:
clive.humphreys22@gmail.com

On your doorstep ... Woodhill:

I've an idea that some of our Trefonen readers will know this walk as it's very local. Hopefully, though, some from other parts of our catchment will find it worthwhile. The total distance is about two miles, so allow an hour plus any rest stops you choose to make.

From Trefonen Village Hall car park, walk across the Jubilee Field to the corner with the adventure playground, exit onto School Lane and, just a few yards further on, turn right to take you past the row of garages. You'll see a Public Bridleway marker post and a gate in front of you. Go through this and follow the fenced-off path down to and through the next gate. After a few yards you cross a stream into a low-lying field. (Now I've walked across here several times and have never known it to be anything but wet and 'squelchy'. Are your walking boots truly waterproof? You're about to find out.) You'll see the next gate in the field boundary opposite.

Once through this gate, your route goes slightly to the left, uphill and between some gorse bushes. Over the next couple of hundred yards, you'll find the occasional marker post to keep you on track until you reach a metalled roadway. The group of buildings which once formed Pentre Farm are away to your right. Keep straight on here, up to and past the cattle grid and onwards, passing Woodhill Home Farm on your right. Follow the left hand bend in the roadway and, shortly afterwards, cross the stile on your right. You'll now cross over an earlier driveway to Woodhill. Go over the stile to the other side of this and immediately turn right.

The Ha-Ha that crosses in front of Woodhill soon comes into view. You're going to follow the stone wall, keeping it close on your right, for the next few hundred yards. I found the account opposite of this Grade II Listed Building on the internet.



"An imposing, if not elegant, red brick eighteenth-century house, composed of an eight-bay block - half of which is two-storeyed and the other half is three-storeyed. The entrance door, with a canopy upon brackets, sits uneasily at the centre of this, whilst to the right is a nineteenth-century, three-bay, three-storeyed block of equal height. Inside the house, an eighteenth-century dog-leg staircase with turned balusters survives, and climbs up to the attics, whilst the main rooms have carved wooden cornices and some decorative ceiling plasterwork.

The house is said to have originally been built for Richard Jones (d. 1750) who had married Hannah Jones. Their only daughter and heiress Elizabeth married Lazarus Venables (d. 1813). Venables added significantly to the house and is said to have moved the entrance front to its current position, also moving the course of the road southwards away from the house. The Venables' son, Lazarus Jones Venables (1772-1856) made further alterations to the house and acquired more land. But, in doing so, he overspent and eventually offered Woodhill for sale in 1852.

The property was finally sold in 1854 to John Lees (d. 1856), a scion of the Lees baronets of Black Rock, Dublin, for £22,000. The Lees family made extensive alterations to the house, circa 1870, to accommodate a new billiard room and dining room, and added a two-storey oriel window onto the right-hand block. At the turn of the twentieth century, the house was the seat of Lees' son, George John Dumville-Lees, President of the Caradoc Field Club, and the billiard room housed his renowned collection of taxidermy. Tragically, Dumville-Lees, who was Master of the Tanatside Harriers from 1884, died following an accident caused by barbed wire whilst hunting in 1906.¹ In the twentieth century, the house lost the external details of the Victorian alterations and a single-storey Doric portico over the entrance door was also removed. Following the Second World War, Woodhill, with its park of about 100 acres, became part of the Brogyntyn estate and, until its disposal, with 93 acres, in 1971 was the Shropshire residence of Lord Harlech.² The house was again offered for sale in 1987."

(Country Houses of Shropshire, Chapter 260, published online in 2023 by Cambridge University Press)

But back to our walk. Keep following the stone wall beyond the house, though you'll have to go round some fallen trees. At one point, you'll see a gate on your right with footpath waymarkers – ignore this. You'll also pass near some derelict cottages (I wonder if the new owners will do anything with these? They'll need mains services and some means of reaching them by car!) You'll now reach a stile – rather a high one – in the fence in front of you. Climb over this and go straight ahead.

You'll see a large clump of gorse bushes at the top of the field you're in. Go up to and behind this to a gate and stile onto the lane.



- 1. The memorial cross between the gate and west door in Trefonen's All Saints churchyard is dedicated to George Dumville-Lees, though his grave is in Chester.*
- 2. Many readers will know that the house has been up for sale again recently. I've heard talk of the price, of who has purchased it and what they intend doing with it. But, as I'm unable to verify these details, I'm not going to repeat them here. The Lord Harlech mentioned above (aka David Ormsby-Gore) was the UK's ambassador to the United States from 1961 to 1965. Already an acquaintance, he became close friends with John F. Kennedy (US President 1961-1963).*

Turn right and, immediately, take the right fork in the road. Very soon, you'll come to another gate and stile on your right. Once over this, you're in a field that is very roughly square in shape, and you should aim for the diagonally opposite corner; the backs of those derelict cottages will be visible.³ Go through the two close-together gates and stiles, then straight ahead, following the line of the hedge. The next stile is the only one my dog couldn't cross by herself – I had to pick her up and lift her over.

You'll see what you might think is the next stile in the middle of the hedge opposite. It isn't. Cross to the diagonally opposite field corner, then turn right through the gate opening and up to Pentre Farm. There are three agricultural sheds in the field below this and the path goes between the right-hand and centre one. Follow the unmade track down the hill and you'll soon recognise where you are. Retrace the first part of the route to get back to the village hall. Has anyone ever crossed the squelchy field without getting their feet wet!?

Meanderer

3. When you look at the route as a whole, you'll realise that you're almost doubling-back on yourself here from the field you've just walked through. Please do not take a short-cut across. This route description takes you along public rights of way. If you deviate, then you may end up trespassing on privately-owned land.

Answers to the quiz:

- | | |
|---------------------|-------------------------|
| 1. Pea soup | 26. Chips |
| 2. Mock Turtle soup | 27. Beans |
| 3. Paté | 28. Cabbage |
| 4. Garlic mushrooms | 29. Trifle |
| 5. Fruit juices | 30. Tart |
| 6. Oxtail soup | 31. Mince pie |
| 7. Prawn cocktail | 32. Ice cream |
| 8. Herring | 33. Sorbet |
| 9. Grouse or Beef | 34. Cream |
| 10. Lamb | 35. Sundae |
| 11. Bacon | 36. Syllabub or Soufflé |
| 12. Rib | 37. Waffle |
| 13. COD | 38. Christmas pie/pud |
| 14. Duck | 39. Tapioca |
| 15. Steak & Kidney | 40. Black Forest gateau |
| 16. Hare | 41. Apple |
| 17. Rabbit | 42. Pear/Peas |
| 18. Eggs | 43. Biscuits and cheese |
| 19. Haggis | 44. Wine |
| 20. Dumpling | 45. Hock/Gammon |
| 21. Macaroni cheese | 46. Water |
| 22. Fish fingers | 47. Orange |
| 23. Curry | 48. Port |
| 24. Onion | 49. Gin and tonic |
| 25. Carrot | 50. Champagne |

Planning a children's party or a family celebration?

Why not book Trefonen Village Hall?

Lots of space and excellent facilities.

Contact:

Val Smout

Bookings Secretary

01691 657011



Trefonen Village Shop

SHOP & POST OFFICE OPENING TIMES:

Monday - Friday:	8.00 - 6.00
Saturday:	9.00 - 1.00
Sunday:	10.00 - 1.00

Telephone 01691 671208

You will find all the items you would expect in a convenience store, but if there is anything you would like Hazel to stock, please let her know and she will do her best!



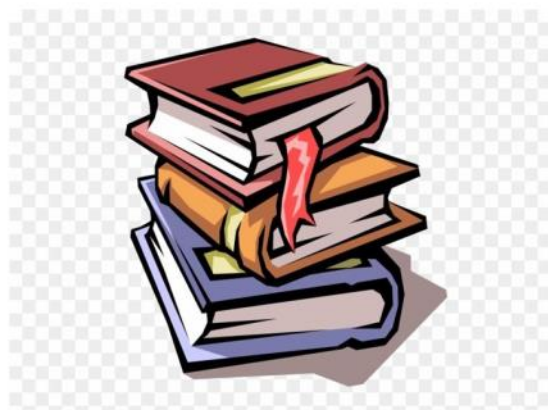
Please support ...

OSWESTRY CHRISTIAN BOOKSHOP

Lower Brook Street, Oswestry, TEL: 01691 661936

For all your needs -

- Cards and gifts for all occasions
- Christian books
- Various translations of the Bible
- CD's and Computer software
- Videos/DVDs for sale
- Bible commentaries, book tokens
- Children's books and second hand books
- Bible study books for you or groups
- Tea, coffee, biscuits available!



Email: info@ocbooks.co.uk

Web: www.ocbooks.co.uk

Church services in June:

		LLANYBLODWEL		TREFONEN	
Sun 2	Trinity 1	11.00am	MORNING WORSHIP Leader: KK	9.30am	HOLY COMMUNION Welcomers: Jean R & June B Tbc Tbc Leader: Rev Edith Quirey & KK
Sun 9	Barnabas the Apostle	9.00am	MORNING WORSHIP Leader: Peter W	9.30am	MORNING WORSHIP Welcomers: Jeremy & Nyria G Jean R Victoris G Leader: Chris K Flowers: Helen F
Sun 16	Trinity 3	9.00am	HOLY COMMUNION Leader: Visiting priest & Abie	9.30am	MORNING WORSHIP Welcomers: John & Diane W Tbc Tbc Leader: KK
Sun 23	Trinity 4	11.00am	MORNING WORSHIP Leader: Rebecca C	9.30am	MORNING WORSHIP Welcomers: Rosmarie S & Helen P Rita M Jill F Leader: Linda G Flowers: Rosmarie S
Sun 30	Trinity 5	3.00pm	BENEFICE SERVICE AT St AGATHA'S, LLANYMYNECH—"PRAISE AND PUDDING" Rev Suzan Williams (Rural Dean) with Linda Gladman		

The above details were, we believe, correct at the time of going to press, but we suggest you keep on the lookout for changes in e.g. Pew Sheets.

Local contacts:

Jubilee Club	Alwena Martin	652791
Jubilee Field	K Kimber	679646
Llanyblodwel Parish Clerk	Amy Jones	llanyblodwelpc@gmail.com 829571
Llanyblodwel & Porth-y-Waen Village Hall Sec.	Bethan Cross	829368
Oswestry Rural (Trefonen) Parish Clerk	Kathryn Lloyd	07534 687663 clerk@oswestryrural-pc.gov.uk
Pre-School: ring 07817 641528 or	Shropshire Council	01743 254452
Trefonen Garden Club	Chris Kirk	688595
Trefonen Indoor Bowling Club	Kath Barkley	828587
Trefonen School	Cathy Dunleavy (Head Teacher)	652960
Trefonen Village Hall bookings	Val Smout	valsmout@btinternet.com 657011
Trefonen Village Hall Caretaker	Clive & Kath Roberts	671360
Trefonen Village website		www.trefonen.org

Some useful services:

Electricity (Scottish Power)	0800 027 0072	Citizens Advice Bureau	0800 144 8848
Severn Trent Water	0800 783 4444	West Mercia Police	0300 333 3000
Dwr Cymru (Welsh Water)	0800 052 0130	Childline	0800 1111
National Rail enquiries	03457 484950	Samaritans	116 123
HOSPITALS:		Drugs & Alcohol Helpline	0800 776600
RJ & AH Orthopaedic	01691 404000	National Domestic Violence Helpline	0808 2000 247
Royal Shrewsbury	01743 261000	Wales Domestic Abuse Helpline	0808 801 0800
Wrexham Maelor	01978 291100	Victim Support (National)	0808 168 9111
Princess Royal Telford	01952 641222	National Missing Persons Helpline	116 000

Mobile Library:

Every other Thursday, 9.05 - 9.40am at the Barley Mow Inn.

Next visits: 13th & 27th June



Deadline for copy for the magazine is the 10th of each month.

This is important! It allows time for the editorial team to compile the contents, followed by printing in time for publication at a weekend towards the end of the previous month. The magazine can also be viewed online, usually a few days earlier, via either the Trefonen Village website (www.trefonen.org) or the Benefice website (www.borderparishes.org.uk).

Out and about ...



The welcome notice at Treflach Farm



Showtime Groovers - the Arty Crafty group's contribution to the Hill Walk weekend